

FLOAT OPERATED CONTROLLERS

F



KIMRAY
INC.®

www.kimray.com

NOTE: We reserve the right to modify or change, without prior notice, any statement or information contained herein.
© Copyright 2020, Kimray, Inc.

GEN II SIDE MOUNT: **08:10.1 - 08:10.3**
 APPLICATIONS: Liquid level controller for oil and gas separators, water knock outs, gas scrubbers and accumulators.
 OPERATING PRESSURE RANGES: 0 psig to 4000 psig

GEN II BACK MOUNT: **08:20.1 - 08:20.3**
 APPLICATIONS: Liquid level controller for oil and gas separators, water knock outs, gas scrubbers and accumulators.
 OPERATING PRESSURE RANGES: 0 psig to 4000 psig

GEN II ELECTRONIC BACK MOUNT: **08:30.1 - 08:30.3**
 APPLICATIONS: Liquid level controller for oil and gas separators, water knockouts, gas scrubbers and accumulators.
 OPERATING PRESSURE RANGES: 0 psig to 4000 psig

GEN II FLOAT ASSEMBLIES: **08:40.1**

HORIZONTAL PNEUMATIC LEVEL SWITCH WITH RELAY: **08:50.1 - 08:50.2**
 APPLICATIONS: Liquid level controller for oil and gas separators, water knockouts, gas scrubbers and accumulators.
 OPERATING PRESSURE RANGES: 0 psig to 2000 psig

HORIZONTAL PNEUMATIC LEVEL SWITCH WITHOUT RELAY: **08:50.3 - 08:50.4**
 APPLICATIONS: Liquid level controller for oil and gas separators, water knockouts, gas scrubbers and accumulators.
 OPERATING PRESSURE RANGES: 0 psig to 2000 psig

HORIZONTAL ELECTRIC LEVEL SWITCH: **08:60.1 - 08:60.3**
 APPLICATIONS: Senses a specific liquid level and produces electric output.
 Electric output can activate alarms, solenoid valves or other electrically switched devices
 OPERATING PRESSURE RANGES: 0 psig to 5000 psig

LEVEL SWITCH HORIZONTAL EXTERNAL FLOAT CAGE **08:70.1**

TECHNICAL DATA:

GEN II SIDE MOUNT DIMENSIONS **08:I**

GEN II BACK MOUNT DIMENSIONS **08:II**

GEN II FLANGE DIMENSIONS **08:III**

PNEUMATIC SWITCH DIMENSIONS **08:IV**

ELECTRONIC SWITCH DIMENSIONS **08:V**

SEALS **08:VI**

MATERIAL SPECIFICATIONS **08:VII**

TEMPERATURE **08:VI**

FLOAT OPERATED CONTROLLERS



CODE BUILDER F SERIES (LEVEL CONTROLS)

Series:

F = Float Operated Controllers

Model:

PC = GEN II Pneumatic Level Controller
 EC = Electric Level Controller (Back Mount only)
 PL = GEN 3 Pneumatic Level Controller

Connection Size:

2 = 2 NPS
 3 = 3 NPS
 4 = 4 NPS
 5 = 5 NPS (HU only)
 6 = 6 NPS

End Connection:

S4 = 4000 psi MNPT - 2 inch only

AR = 150 RF
 BR = 300 RF
 DR = 600 RF
 ER = 900 RF
 FR = 1500 RF
 DJ = 600 RTJ
 EJ = 900 RTJ
 FJ = 1500 RTJ
 HU = Hammer Union - 3,4,5 inch only
 GV = Grooved - 2 inch L & R only (PC & EC only)

Mounting Type:

L = Left Side Mount
 R = Right Side Mount
 B = Back Mount (PC & EC only)

Displacer Type:

Displacer Extensions:

A = None
 B = 6 inch
 C = 12 inch
 D = 18 inch

1 = 1 7/8 x 12

2 = 1 7/8 x 20

3 = 2 3/4 x 14 1/4

4 = 2 1/2 x 12

5 = 1 7/8 x 5 11/16

6 = 1 3/4 x 12

7 = 1 3/4 x 20

Poly
4000 psi

316SS
2000 psi

Service Type:

S = Standard LCC body
 C = Corrosive (S6 body)

F PC 2 S4 B 1 A S

Options: Additional cost and lead times will apply
 If multiple options required input in sequential order
 Leave blank if no options required

1 = NACE Certification (Corrosive Option Only)
 2 = Hydrostatic Test Certification
 3 = MTR (Shell Components)
 A = AFLAS Elastomer
 H = HSN Elastomer
 X = Export (Hydrostatic test, MTR & 3.1)

Not all selections available on all products listed.
 See product pages 08:10.1 - 08:30.3 for available options

Series:

F = Float Operated Controllers

Model:

PS = Pneumatic Level Switch
PK = Pneumatic Level Switch w/o Relay
PX = Pneumatic Extended Level Switch
ES = Electric Level Switch
EL = Electric Level Switch Low power
EV = Electric Level Switch Vertical Float

Connection Size:

1 = 1 1/2 NPS (ES, EL & EV only)
2 = 2 NPS

End Connection:

S4 = MNPT

Override:

W = With manual Override
N = Without Manual Override

Float Type:

P = Poly - 5000 psi (ES, EL & EV only)
S = 316SS - 2000 psi

Float Extensions:

A = None

Service Type:

S = Standard

| | | | | | | | | |
|---|----|---|----|---|---|---|---|--|
| F | PS | 2 | S4 | W | P | A | S | |
|---|----|---|----|---|---|---|---|--|

Options: Additional cost and lead times will apply
If multiple options required input in sequential order
Leave blank if no options required

1 = NACE Certification
2 = Hydrostatic Test Certification
3 = MTR (Shell Components)
A = AFLAS Elastomers
H = HSN Elastomer
X = Export (Hydrostatic test, MTR & 3.1)

Not all selections available on all products listed.
See product pages 08:50.1 - 08:60.3 for available options

NOTES:



Kimray is an ISO 9001- certified manufacturer.

APPLICATIONS:

Liquid level controller for oil and gas separators, water knockouts, gas scrubbers and accumulators.

Liquid interface control in fluids of 0.20 minimum differential specific gravities with the standard displacer. Other displacers are available to control liquid interface to 0.10 minimum specific gravities.

Operates any diaphragm control valve requiring not more than 45 psig diaphragm pressure.

FEATURES:

- Compact design fits in production units & other tight spaces.
- Snap or throttle control in one pilot
- Easily convert b/tw left/right mount & direct/indirect action
- Non-bleed pilot (Preferred EPA Natural Gas Star BMP)
- 1/4" NPT vent ports for optional emissions capture
- No vent gas in enclosure
- Simple pilot removal
- Powder coated enclosure
- Vibration resistant
- PVC Displacer (Std.) (4000 psi, 175°F);
- 316 SS Displacer (Optional) (1500 psi, 350°F)
- 40 micron supply gas filter
- Paraffin cleanout port

CERTIFICATIONS:

- NACE MR0175 compliant Wetted Parts option available
- Certification documents available upon request, specify when ordering

Kimray is an ISO 9001- certified manufacturer.

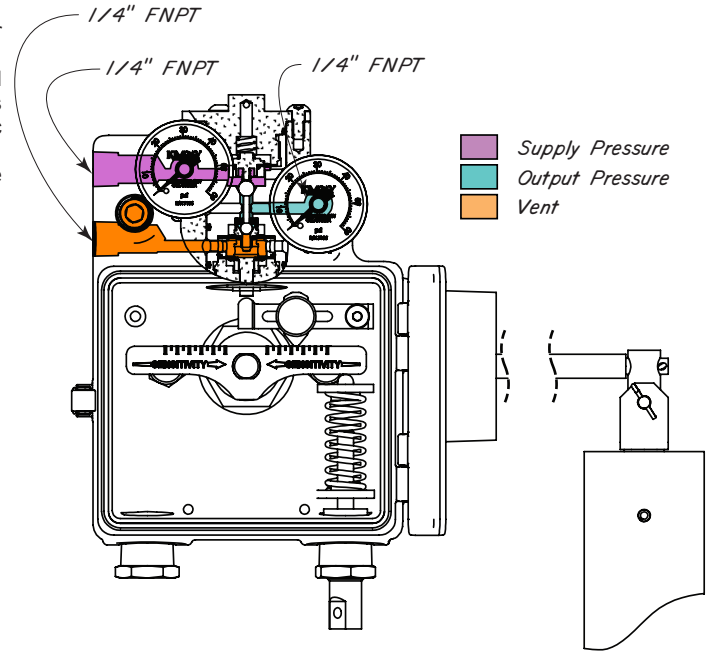


Image above shown in left mount

| Standard Configuration Code † | Order Code | Line Size | Connection Type | Mounting Type | Supply Press. psig | Max. W.P. †† psig | |
|-------------------------------|------------|-----------|-----------------|---------------|--------------------|-------------------|------|
| FPL2S4L1AS | LCL | 2" | NPT | Left Hand | 5 - 45 | 4000 | |
| FPL2ARL1AS | LCA | | 150RF | | | 285 | |
| FPL2BRL1AS | | | 300RF | | | 740 | |
| FPL2DRL1AS | | | 600RF | | | 1480 | |
| FPL2FRL1AS | | | 1500RF | | | 3705 | |
| FPL2DJL1AS | | | 600RTJ | | | 1480 | |
| FPL2FJL1AS | | | 1500RTJ | | | 3705 | |
| FPL3ARL1AS | LCW | | 3" | | | 150RF | 285 |
| FPL3BRL1AS | | | | | | 300RF | 740 |
| FPL3DRL1AS | | | | | | 600RF | 1480 |
| FPL3ERL1AS | | 900RF | | 2220 | | | |
| FPL3FRL1AS | | 1500RF | | 3705 | | | |
| FPL3DJL1AS | | 600RTJ | | 1480 | | | |
| FPL3EJL1AS | | 900RTJ | | 2220 | | | |
| FPL3HUL1AS | LDC | H.U. | 3000 | | | | |
| FPL4ARL1AS | LDM | 4" | 150RF | 285 | | | |
| FPL4BRL1AS | | | 300RF | 740 | | | |
| FPL4DRL1AS | | | 600RF | 1480 | | | |
| FPL4ERL1AS | | | 900RF | 2220 | | | |
| FPL4FRL1AS | | | 1500RF | 3705 | | | |
| FPL4DJL1AS | | | 600RTJ | 1480 | | | |
| FPL4HUL1AS | | | H.U. | 1500 | | | |
| FPL5HUL1AS | | | LEM | 5" | H.U. | 1500 | |
| FPL6FRL1AS | | | | 6" | 1500RF | 3705 | |

| Standard Configuration Code † | Order Code | Line Size | Connection Type | Mounting Type | Supply Press. psig | Max. W.P. †† psig | |
|-------------------------------|------------|-----------|-----------------|---------------|--------------------|-------------------|------|
| FPL2S4R1AS | LCR | 2" | NPT | Right Hand | 5 - 45 | 4000 | |
| FPL2ARR1AS | LCJ | | 150RF | | | 285 | |
| FPL2BRR1AS | | | 300RF | | | 740 | |
| FPL2DRR1AS | | | 600RF | | | 1480 | |
| FPL2FRR1AS | | | 1500RF | | | 3705 | |
| FPL2DJR1AS | | | 600RTJ | | | 1480 | |
| FPL2FJR1AS | | | 1500RTJ | | | 3705 | |
| FPL3ARR1AS | LDF | | 3" | | | 150RF | 285 |
| FPL3BRR1AS | | | | | | 300RF | 740 |
| FPL3DRR1AS | | | | | | 600RF | 1480 |
| FPL3ERR1AS | | 900RF | | 2220 | | | |
| FPL3FRR1AS | | 1500RF | | 3705 | | | |
| FPL3DJR1AS | | 600RTJ | | 1480 | | | |
| FPL3EJR1AS | | 900RTJ | | 2220 | | | |
| FPL3HUR1AS | LDL | H.U. | 3000 | | | | |
| FPL4ARR1AS | LDV | 4" | 150RF | 285 | | | |
| FPL4BRR1AS | | | 300RF | 740 | | | |
| FPL4DRR1AS | | | 600RF | 1480 | | | |
| FPL4ERR1AS | | | 900RF | 2220 | | | |
| FPL4FRR1AS | | | 1500RF | 3705 | | | |
| FPL4DJR1AS | | | 600RTJ | 1480 | | | |
| FPL4HUR1AS | | | H.U. | 1500 | | | |
| FPL5HUR1AS | | | LEV | 5" | H.U. | 1500 | |
| FPL6FRR1AS | | | | 6" | 1500RF | 3705 | |

NOTES:

For standard & optional seals, metals, Cf Cv values, material specifications & dimensions see technical data on pages 08:I - 08:VII

† For Corrosive service remove last "S" & replace with "C"

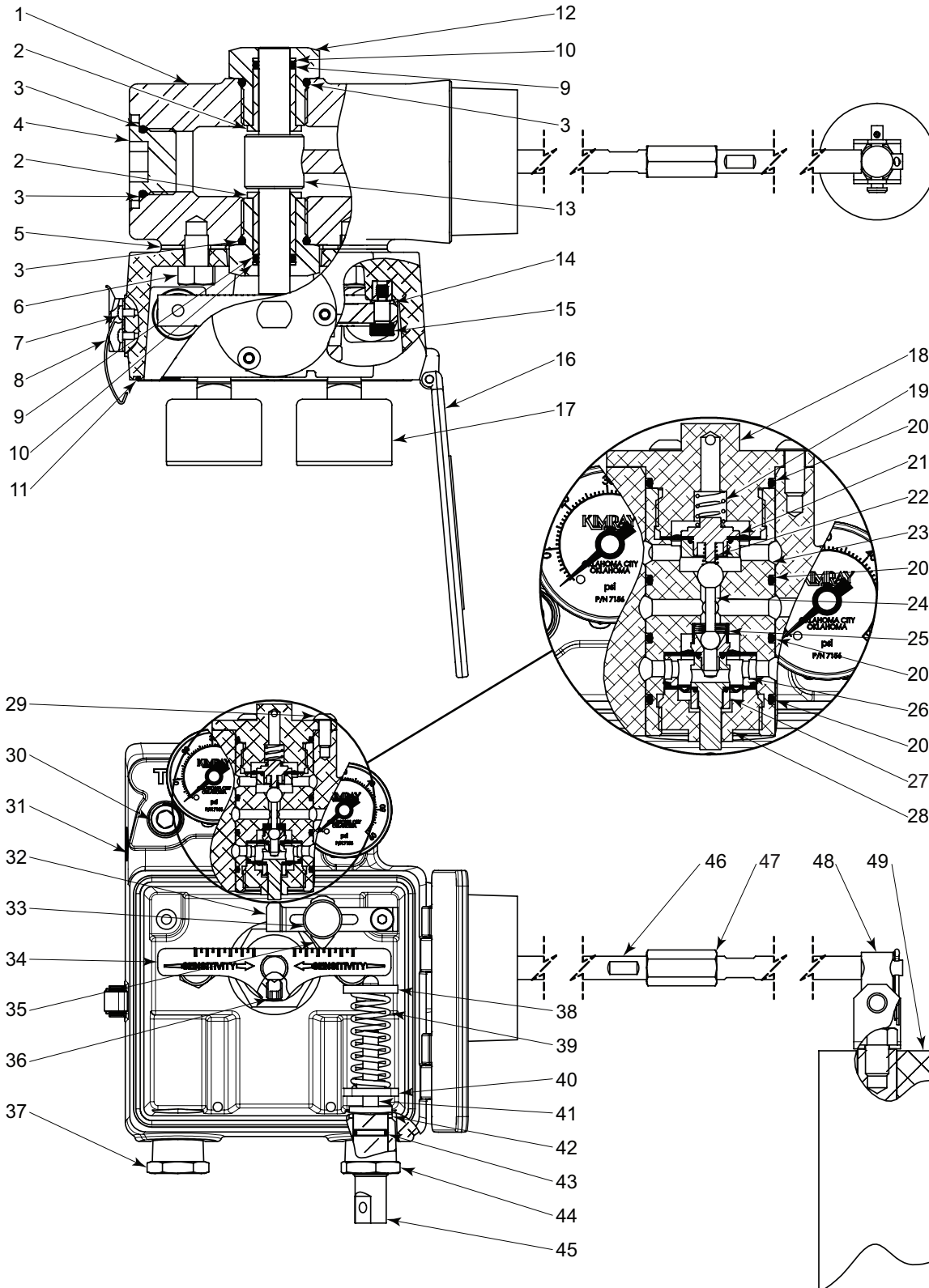
† For code builder see page 08:00.2

†† Max W.P. values based on -20°F to 100°F.

All Pictures shown are for illustration purpose only. Actual product may vary due to product enhancement.

FLOAT OPERATED CONTROLLERS

GEN 3 PNEUMATIC LEVEL CONTROLLER MODEL PL



All Pictures shown are for illustration purpose only. Actual product may vary due to product enhancement.

| ITEM | QTY. | DESCRIPTION | PART NUMBER | | | | | | CORROSIVE |
|------|------|--------------|-------------|--------|--------|--------|--------|--------|-----------|
| | | | STANDARD | | | | | | |
| | | | 2 INCH | 3 INCH | 4 INCH | 5 INCH | 6 INCH | 2 INCH | |
| 1 | 1 | Body | | | | | | 2 INCH | |
| | | MNPT | 7736 | ---- | ---- | ---- | ---- | 7736S6 | |
| | | 150RF | 7820 | 7826 | 7833 | ---- | ---- | ---- | |
| | | 300RF | 7821 | 7827 | 7834 | ---- | ---- | ---- | |
| | | 600RF | 7822 | 7828 | 7835 | ---- | ---- | ---- | |
| | | 900RF | ---- | 7829 | 7836 | ---- | ---- | ---- | |
| | | 1500RF | 7823 | 7830 | 7837 | ---- | 7839 | ---- | |
| | | 600RTJ | 7824 | 7831 | 7838 | ---- | ---- | ---- | |
| | | 900RTJ | ---- | 7832 | ---- | ---- | ---- | ---- | |
| | | 1500RTJ | 7825 | ---- | ---- | ---- | ---- | ---- | |
| | | Hammer Union | ---- | 7759 | 7760 | 7761 | ---- | ---- | |

| ITEM | QTY. | DESCRIPTION | PART NO | ITEM | QTY. | DESCRIPTION | PART NO |
|----------------|------|-----------------------------|---------|---|------|----------------------------|---------|
| 2 | 2 | Flanged Bearing * | 7678 | 27 | 1 | Lower Diaphragm Assy. ◇ * | 7096AS |
| 3 | 3 | O-Ring, Fitting * | 7679V | 28 | 1 | Bottom Cartridge Cap ◇ | 7743 |
| 4 | 1 | SAE Bearing | 7667S6 | 29 | 3 | Pilot Screw | 7739 |
| 5 | 1 | Mount Gasket * | 7754 | 30 | 3 | NPT Socket Plug | 7762 |
| 6 | 2 | Mount Screw | 7908 | 31 | 1 | Enclosure | 7735AS |
| 7 | 2 | Latch Screw | 7752 | 32 | 1 | Pilot Lever | 7673 |
| 8 | 1 | Latch | 5463 | 33 | 1 | Sensitivity Knob | 7742 |
| 9 | 2 | O-Ring, Shaft * | 7758V | 34 | 1 | Torque Lever | 7672 |
| 10 | 2 | Back-Up Standard * | 7680V | 35 | 1 | Sensitivity Fulcrum | 7674 |
| | | Shaft PTFE (AFLAS kit only) | 7819 | 36 | 1 | Torque Level Set Screw | 7749 |
| 11 | 1 | Cover Seal | 7763 | 37 | 1 | Hex NPT Plug | 7756 |
| 12 | 2 | Bearing Hub | 7666 | 38 | 1 | Upper Spring Plate | 7675 |
| 13 | 1 | Torque Shaft | 7668 | 39 | 1 | Spring Light | 7725 |
| 14 | 1 | Pilot Washer * | 7751 | | | Spring Heavy | 7726 |
| 15 | 1 | Pilot Lever Screw | 7740 | 40 | 1 | Lower Spring Plate | 7676 |
| 16 | 1 | Enclosure Cover | 7737 | 41 | 1 | Spring Adjuster Set Screw | 7750 |
| 17 | 2 | Gauge | 7156 | 42 | 1 | Spring Adjuster Washer * | 7727 |
| 18 | 1 | Top Cartridge Cap ◇ | 7745 | 43 | 1 | O-Ring, Spring Adjuster * | 7748 |
| 19 | 1 | Booster Spring ◇ * | 585L | 44 | 1 | Spring Adjuster Bushing | 7757 |
| 20 | 4 | O-Ring, Pilot ◇ * | 5226V | 45 | 1 | Spring Adjusting Knob | 7677 |
| 21 | 1 | Upper Diaphragm Assy. ◇ * | 7102AS | 46 | 1 | Displacer Arm | 7681 |
| 22 | 1 | Conical Spring ◇ * | 5469 | 47 | 1 | Waggle Arm Coupling | 5454 |
| 23 | 1 | Cartridge Body ◇ | 7744 | 48 | 1 | Rod Assembly | 7723A |
| 24 | 1 | Pilot Plug ◇ * | 112 | | 1 | Optional 6" Arm Extension | 5543L6 |
| 25 | 1 | Spring ◇ * | 5541 | | | Optional 12" Arm Extension | 5543L12 |
| 26 | 1 | Diaphragm Spacer ◇ | 5475 | | | Optional 18" Arm Extension | 5543L18 |
| Repair Kits | | | RYC | * These parts are recommended spare parts and stocked as repair kits. | | | |
| Pilot Assembly | | | YBZ | ◇ These parts are stocked as Pilot Assembly | | | |

| ITEM | QTY. | DESCRIPTION | PART NO | WEIGHT | MAX TEMP | MAX PSI | MIN DIFF. SP.GR. | MATERIAL | SPRING P/N BASED ON EXTENSION LENGTH | | | |
|------|------|---------------------|------------|-----------|----------|---------|------------------|----------|--------------------------------------|---------|----------|----------|
| | | | | | | | | | NO Ext. | 6" Ext. | 12" Ext. | 18" Ext. |
| 49 | 1 | Displacers | | | | | | | | | | |
| | | 1 7/8" x 12" Lg | 7637A | 1lb 15oz | 180°F | 4000 | >0.20 | PVC | 7725 | 7725 | 7725 | 7725 |
| | | 2 1/2" x 12" Lg | 7639A | 3lb 0.5oz | 180°F | 4000 | >0.15 | PVC | 7725 | 7725 | 7726 | 7726 |
| | | 1 7/8" x 20" Lg | 7638A | 3lb 5oz | 180°F | 4000 | >0.15 | PVC | 7725 | 7725 | 7726 | 7726 |
| | | 2 3/4" x 14 1/4" Lg | 7640A | 4lb 5oz | 180°F | 4000 | >0.1 | PVC | 7725 | 7726 | 7726 | 7726 |
| | | 1 3/4" x 12" Lg | 5461SS6 | 1lb 15oz | 500°F | 2000 | >0.20 | 316SS | 7725 | 7725 | 7725 | 7725 |
| | | 1 3/4" x 20" Lg | 5461SS6L20 | 3lb 0oz | 500°F | 2000 | >0.17 | 316SS | 7725 | 7725 | 7726 | 7726 |

| ACCESSORIES (not shown) | |
|-------------------------|-------------|
| ITEM | DESCRIPTION |
| Hex Key | 7845 |
| Filter | 7847 |

| EXTENSION RODS KITS | | | |
|---------------------|--------|----------|----------|
| Extension Kit | Length | Coupling | Arm Ext. |
| LPA | 6" | 5454 | 5543L6 |
| LPB | 12" | 5454 | 5543L12 |
| LPC | 18" | 5454 | 5543L18 |

NOTES:



Kimray is an ISO 9001- certified manufacturer.

SIDE MOUNT PNEUMATIC LEVEL CONTROLLER MODEL PC

APPLICATIONS:

Liquid level controller for oil and gas separators, water knockouts, gas scrubbers and accumulators.

Liquid interface control in fluids of 0.20 minimum differential specific gravities with the standard displacer. Other displacers are available to control liquid interface to 0.10 minimum specific gravities.

Operates any diaphragm motor valve requiring not more than 30 psig diaphragm pressure.

FEATURES:

- Compact design
- Snap or throttle control in one pilot
- Intermittent vent pilot (Preferred EPA Natural Gas Star BMP)
- Low Temp Process Seal (Std.) (-50°F to 300°F) LTV
- Powder coated enclosure
- Vibration tough
- No vent gas in enclosure
- PVC Displacer (Std.) (4000 psi, 175°F);
- 316 SS Displacer (1500 psi, 350°F)
- 40 micron supply gas filter
- 1/4" NPT vented pilot
- Simple pilot removal

CERTIFICATIONS:

- NACE MR0175 compliant Wetted Parts
- Certification documents available upon request, specify when ordering

Kimray is an ISO 9001- certified manufacturer.

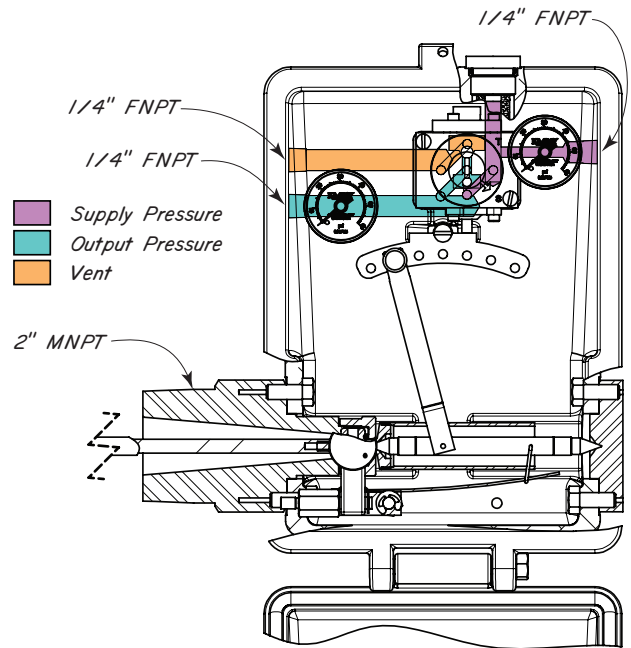


Image above shown in Right Hand configuration

| Standard Configuration Code † | Order Code | Line Size | Connection Type | Mounting Type | Supply Press. psig | Max. W.P. †† psig |
|-------------------------------|------------|-----------|-----------------|---------------|--------------------|-------------------|
| FPC2S4L1AS | CML | 2" | NPT | Left Hand | 5 - 30 | 4000 |
| FPC2ARL1AS | CNB | | 150RF | | | 285 |
| FPC2BRL1AS | CNF | | 300RF | | | 740 |
| FPC2DRL1AS | CNJ | | 600RF | | | 1480 |
| FPC2FRL1AS | CNN | | 1500RF | | | 3705 |
| FPC2DJL1AS | CRT | | 600RTJ | | | 1480 |
| FPC2FJL1AS | CRX | | 1500RTJ | | | 3705 |
| FPC3ARL1AS | CNR | | 3" | | | 150RF |
| FPC3BRL1AS | CNV | 300RF | | 740 | | |
| FPC3DRL1AS | CNZ | 600RF | | 1480 | | |
| FPC3ERL1AS | COE | 900RF | | 2220 | | |
| FPC3FRL1AS | CPR | 1500RF | | 3705 | | |
| FPC3DJL1AS | CSB | 600RTJ | | 1480 | | |
| FPC3EJL1AS | CSF | 900RTJ | | 2220 | | |
| FPC3HUL1AS | CWE | H.U. | | 3000 | | |
| FPC4ARL1AS | COI | 4" | 150RF | Left Hand | 5 - 30 | 285 |
| FPC4BRL1AS | COM | | 300RF | | | 740 |
| FPC4DRL1AS | COQ | | 600RF | | | 1480 |
| FPC4ERL1AS | CTY | | 900RF | | | 2220 |
| FPC4FRL1AS | CPV | | 1500RF | | | 3705 |
| FPC4DJL1AS | CSJ | | 600RTJ | | | 1480 |
| FPC4HUL1AS | CQZ | | H.U. | | | 1500 |
| FPC5HUL1AS | CWB | | 5" | | | H.U. |
| FPC6FRL1AS | CPZ | 6" | 1500RF | 3705 | | |

| Standard Configuration Code † | Order Code | Line Size | Connection Type | Mounting Type | Supply Press. psig | Max. W.P. †† psig |
|-------------------------------|------------|-----------|-----------------|---------------|--------------------|-------------------|
| FPC2S4R1AS | CMK | 2" | NPT | Right Hand | 5 - 30 | 4000 |
| FPC2ARR1AS | CNA | | 150RF | | | 285 |
| FPC2BRR1AS | CNE | | 300RF | | | 740 |
| FPC2DRR1AS | CNI | | 600RF | | | 1480 |
| FPC2FRR1AS | CNM | | 1500RF | | | 3705 |
| FPC2DJR1AS | CRS | | 600RTJ | | | 1480 |
| FPC2FJR1AS | CRW | | 1500RTJ | | | 3705 |
| FPC3ARR1AS | CNQ | | 3" | | | 150RF |
| FPC3BRR1AS | CNU | 300RF | | 740 | | |
| FPC3DRR1AS | CNY | 600RF | | 1480 | | |
| FPC3ERR1AS | COD | 900RF | | 2220 | | |
| FPC3FRR1AS | CPQ | 1500RF | | 3705 | | |
| FPC3DJR1AS | COD | 600RTJ | | 1480 | | |
| FPC3EJR1AS | CSE | 900RTJ | | 2220 | | |
| FPC3HUR1AS | CQJ | H.U. | | 3000 | | |
| FPC4ARR1AS | COH | 4" | 150RF | Right Hand | 5 - 30 | 285 |
| FPC4BRR1AS | COL | | 300RF | | | 740 |
| FPC4DRR1AS | COP | | 600RF | | | 1480 |
| FPC4ERR1AS | CWG | | 900RF | | | 2220 |
| FPC4FRR1AS | COU | | 1500RF | | | 3705 |
| FPC4DJR1AS | CSI | | 600RTJ | | | 1480 |
| FPC4HUR1AS | CQY | | H.U. | | | 1500 |
| FPC5HUR1AS | CWC | | 5" | | | H.U. |
| FPC6FRR1AS | CPY | 6" | 1500RF | 3705 | | |

NOTES:

For standard & optional seals, metals, Cf Cv values, material specifications & dimensions see technical data on pages 08:I - 08:VII

† For Corrosive service remove last "S" & replace with "C"

† For code builder see page 08:00.2

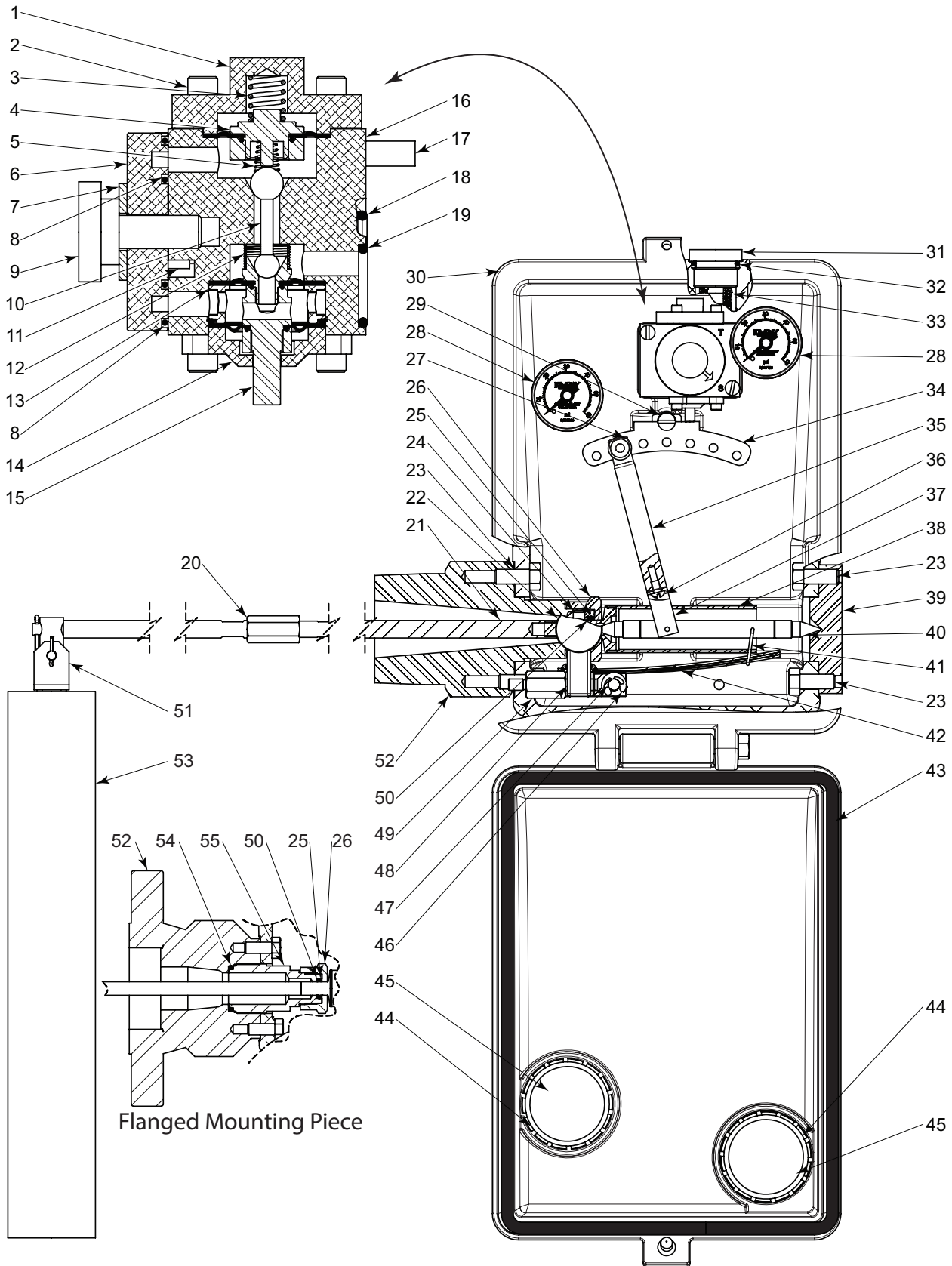
†† Max W.P. values based on -20°F to 100°F.

All Pictures shown are for illustration purpose only. Actual product may vary due to product enhancement.

FLOAT OPERATED CONTROLLERS



SIDE MOUNT PNEUMATIC LEVEL CONTROLLER MODEL PC PARTS DRAWING



Images shown in Right Hand configuration

All Pictures shown are for illustration purpose only. Actual product may vary due to product enhancement.



FLOAT OPERATED CONTROLLERS

SIDE MOUNT PNEUMATIC LEVEL CONTROLLER MODEL PC PARTS LIST

| ITEM | QTY. | DESCRIPTION | PART NO | ITEM | QTY. | DESCRIPTION | PART NO |
|------|------|--------------------|------------|------|------|---------------------------|--|
| 1 | 1 | Upper Cap | ◇ 5449 | 30 | 1 | Case & Cover Assembly | 5444AS |
| 2 | 6 | Screw | ◇ 7189 | 31 | 1 | Filter Cap | 5502 |
| 3 | 1 | Spring | ◇ * 585L | 32 | 1 | O-Ring | * 5500V |
| 4 | 1 | Diaphragm Assembly | ◇ * 7102AS | 33 | 1 | Filter | 5486 |
| 5 | 1 | Throttle Spring | ◇ * 5469 | 34 | 1 | Tangent Arm | 5466 |
| 6 | 1 | Switch Plate | ◇ 6799 | 35 | 1 | Link | 6607 |
| 7 | 1 | Lock Washer | ◇ 4543 | 36 | 1 | Screw | 2426 |
| 8 | 2 | O-Ring | ◇ * 5540V | 37 | 1 | Yoke | 5491 |
| 9 | 1 | Thumb Screw | ◇ 6780 | 38 | 1 | Ext. Housing | 5455 |
| 10 | 1 | Pilot Plug | ◇ * 112 | 39 | 1 | Pivot Plate | 5442 |
| 11 | 1 | Selector Pin | ◇ 5483 | 40 | 1 | Pivot Rod | 5460 |
| 12 | 1 | Spring | ◇ 5541 | 41 | 1 | Wire | 5458 |
| 13 | 1 | Spacer | ◇ * 5475 | 42 | 1 | Spring Assembly | No Rod Extension 5467A with Rod Extension 5557A |
| 14 | 1 | Bottom Cap | ◇ 5450 | 43 | 1 | Gasket | 5446 |
| 15 | 1 | Actuator Assembly | ◇ * 7096AS | 44 | 2 | Retaining Ring | 5509 |
| 16 | 1 | Pilot Block | ◇ 7346 | 45 | 2 | Lens | 5447 |
| 17 | 2 | Screw | ◇ 4918 | 46 | 2 | Snap Ring | 941 |
| 18 | 2 | O-Ring | ◇ * 647V | 47 | 1 | Pivot Post | 5505 |
| 19 | 1 | O-Ring | ◇ * 920V | 48 | 1 | Adjustment Lever | 5465 |
| 20 | 1 | Coupling | 5454 | 49 | 1 | Arm Post | 5504 |
| 21 | 1 | Waggle Arm | 7078S6AS | 50 | 1 | Teflon Seal Ring | * 5545 |
| 22 | 1 | Adjusting Screw | 5481 | | 3 | Plug (not shown) | 699 |
| 23 | 4 | Screw | 5484 | | 1 | Breather Plug (not shown) | 147 |
| 24 | 1 | Set Screw | 5595 | | | | |
| 25 | 1 | O-Ring | * 855LTN | | | | |
| 26 | 1 | Retainer | 5459 | | | | |
| 27 | 1 | Pull Pin Assembly | 6549 | | | | |
| 28 | 2 | Gauge | 7156 | | | | |
| 29 | 1 | Screw | 5485 | | | | |
| | | Repair Kits | RMD | | | | |
| | | Pilot Assembly | YBT | | | | |

* These parts are recommended spare parts and stocked as repair kits.
◇ These parts are stocked as Pilot Assembly

| ITEM | QTY. | DESCRIPTION | PART NUMBER | | | | | | | | | | | |
|------|------|--------------|-------------|--------|-------------|--------|--------|----------|-----------|--------|--------|--------|--|--|
| | | | STANDARD | | | | | | CORROSIVE | | | | | |
| | | | 2 INCH | 3 INCH | 4 INCH | 5 INCH | 6 INCH | 2 INCH | 3 INCH | 4 INCH | 5 INCH | 6 INCH | | |
| 52 | 1 | Body | 2 INCH | 3 INCH | 4 INCH | 5 INCH | 6 INCH | 2 INCH | 3 INCH | 4 INCH | 5 INCH | 6 INCH | | |
| | | MNPT | 5528 | ---- | ---- | ---- | ---- | 5528S6 ‡ | ---- | ---- | ---- | ---- | | |
| | | 150RF | 5562 | 5570 | 5575 | ---- | ---- | ---- | ---- | ---- | ---- | ---- | | |
| | | 300RF | 5563 | 5555 | 5576 | ---- | ---- | ---- | ---- | ---- | ---- | ---- | | |
| | | 600RF | 5564 | 5571 | 5577 | ---- | ---- | ---- | ---- | ---- | ---- | ---- | | |
| | | 900RF | ---- | 5572 | 7184 | ---- | ---- | ---- | ---- | ---- | ---- | ---- | | |
| | | 1500RF | 5565 | 6414 | 5579 | ---- | 5580 | ---- | ---- | ---- | ---- | ---- | | |
| | | 600RTJ | 5568 | 5573 | 5578 | ---- | ---- | ---- | ---- | ---- | ---- | ---- | | |
| | | 900RTJ | ---- | 5574 | ---- | ---- | ---- | ---- | ---- | ---- | ---- | ---- | | |
| | | 1500RTJ | 5569 | ---- | ---- | ---- | ---- | ---- | ---- | ---- | ---- | ---- | | |
| | | Hammer Union | ---- | 5558 | 5551 | 5552 | ---- | ---- | ---- | ---- | ---- | | | |
| | | Grooved | ---- | ---- | 5548 + 2174 | ---- | ---- | ---- | ---- | ---- | ---- | | | |

‡ Coated Parts available with "K" service type

| ITEM | QTY. | DESCRIPTION | PART NO | WEIGHT | MAX TEMP | MAX PSI | MIN DIFFERENTIAL SP.GR. | MATERIAL |
|------|------|---------------------|------------|-----------|----------|---------|-------------------------|----------|
| 53 | 1 | Displacers | | | | | | |
| | | 1 7/8" x 12" Lg | 7637A | 1lb 15oz | 180°F | 4000 | >0.20 | PVC |
| | | 1 7/8" x 20" Lg | 7638A | 3lb 5oz | 180°F | 4000 | >0.15 | PVC |
| | | 2 3/4" x 14 1/4" Lg | 7640A | 4lb 5oz | 180°F | 4000 | >0.1 | PVC |
| | | 2 1/2" x 12" Lg | 7639A | 3lb 0.5oz | 180°F | 4000 | >0.15 | PVC |
| | | 1 3/4" x 12" Lg | 5461SS6 | 1lb 15oz | 500°F | 2000 | >0.20 | 316SS |
| | | 1 3/4" x 20" Lg | 5461SS6L20 | 3lb 0oz | 500°F | 2000 | >0.17 | 316SS |

| Flanged Mounting Piece Assembly | | | |
|---------------------------------|------|-------------|---------|
| ITEM | QTY. | DESCRIPTION | PART NO |
| 54 | 1 | O-Ring * | 5482LTV |
| 55 | 1 | Housing | 5456 |

| EXTENSION RODS KITS | | | |
|---------------------|-------|--------|--------|
| Length | 6" | 12" | 18" |
| Extension Kit | CMOL6 | CMOL12 | CMOL18 |

| SPRING ASSEMBLIES | | | |
|-------------------|-------|--------|--------|
| Assembly | Screw | Toggle | Spring |
| 5467A | 1085 | 5664 | 5467 |
| 5557A | | | 5557 |

NOTES:



Kimray is an ISO 9001- certified manufacturer.

APPLICATIONS:

Liquid level controller for oil and gas separators, water knockouts, gas scrubbers and accumulators.

Liquid interface control in fluids of 0.20 minimum differential specific gravities with the standard displacer. Other displacers are available to control liquid interface to 0.10 minimum specific gravities.

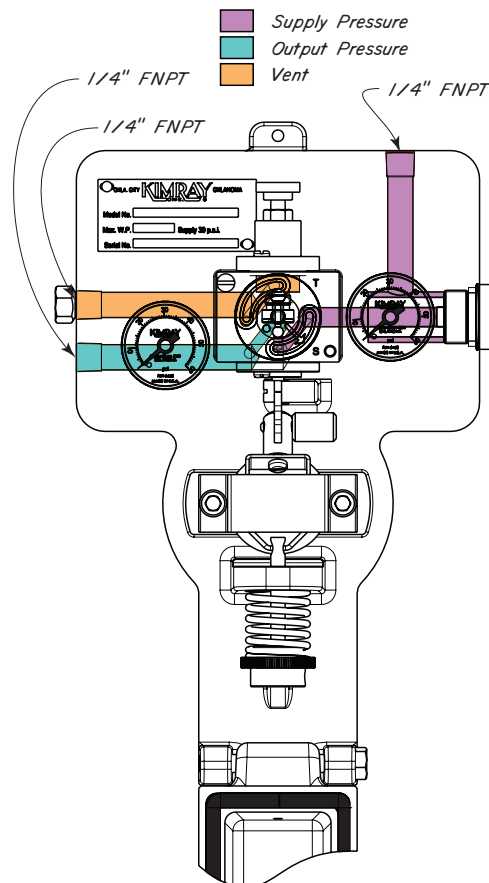
Operates any diaphragm motor valve requiring not more than 30 psig diaphragm pressure.

FEATURES:

- Compact design
- Snap or throttle control in one pilot
- Intermittent vent pilot (Preferred EPA Natural Gas Star BMP)
- NACE MR0175 compliant Wetted Parts
 - Certification documents available upon request, specify when ordering
- Low Temp Process Seal (Std.) (-50°F to 300°F) LTV
- Powder coated enclosure
- Vibration tough
- No vent gas in enclosure
- PVC Displacer (Std.) (4000 psi, 175°F);
- 316 SS Displacer (1500 psi, 350°F)
- 40 micron supply gas filter
- 1/4" NPT vented pilot
- Adjustment knob snap range (Patent Pending)
- Simple pilot removal

CERTIFICATIONS:

Canadian Registration Number (CRN):
0H11522.2134567890NTY
Kimray is an ISO 9001- certified manufacturer.



| Standard Configuration Code † | Order Code | Line Size | Connection Type | Mounting Type | Supply Pressure | Max. W.P. †† |
|-------------------------------|------------|-----------|-----------------|---------------|-----------------|--------------|
| FPC2S4B1AS | CMM | 2" | NPT | Back Mount | 5 - 30 | 4000 |
| FPC2ARB1AS | COT | | 150RF | | | 285 |
| FPC2BRB1AS | COV | | 300RF | | | 740 |
| FPC2DRB1AS | COX | | 600RF | | | 1480 |
| FPC2FRB1AS | COZ | | 1500RF | | | 3705 |
| FPC2DJB1AS | CSY | | 600RTJ | | | 1480 |
| FPC2FJB1AS | CTA | | 1500RTJ | | | 3705 |
| FPC3ARB1AS | CPB | 3" | 150RF | | | 285 |
| FPC3BRB1AS | CPD | | 300RF | | | 740 |
| FPC3DRB1AS | CPF | | 600RF | | | 1480 |
| FPC3ERB1AS | CPH | | 900RF | | | 2220 |
| FPC3FRB1AS | CRC | | 1500RF | | | 3705 |
| FPC3DJB1AS | CTC | | 600RTJ | | | 1480 |
| FPC3EJB1AS | CTE | | 900RTJ | | | 2220 |
| FPC3HUB1AS | CST | H.U. | 3000 | | | |
| FPC4ARB1AS | CPJ | 4" | 150RF | 285 | | |
| FPC4BRB1AS | CPL | | 300RF | 740 | | |
| FPC4DRB1AS | CPN | | 600RF | 1480 | | |
| FPC4FJB1AS | CRE | | 1500RF | 3705 | | |
| FPC4DJB1AS | CTG | | 600RTJ | 1480 | | |
| FPC4EJB1AS | CTI | | 900RTJ | 2220 | | |
| FPC4FJB1AS | CTK | | 1500RTJ | 3705 | | |
| FPC4HUB1AS | CPP | H.U. | 1500 | | | |
| FPC5HUB1AS | CTO | 5" | H.U. | 1500 | | |
| FPC6ERB1AS | CRG | 6" | 600RF | 1480 | | |
| FPC6FRB1AS | CRI | | 1500RF | 3705 | | |

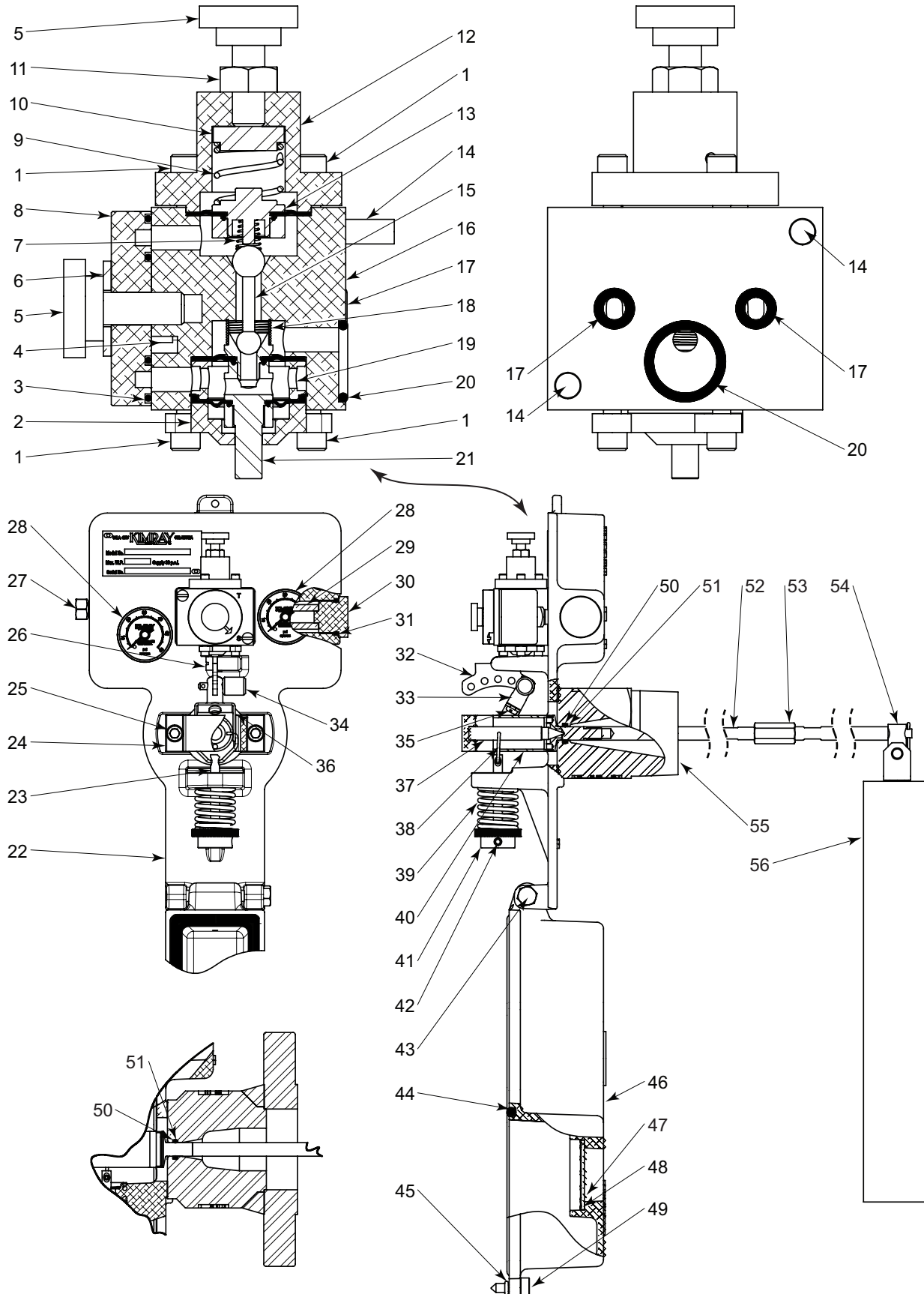
NOTES:

- For standard & optional seals, metals, material specifications & dimensions see technical data on pages 08:I - 08:VII
- † For Corrosive service remove last "S" & replace with "C"
- † For KimCoat option remove last "S" & replace with "K"
- † For code builder see page 08:00.2
- †† Max W.P. values based on -20°F to 100°F.

FLOAT OPERATED CONTROLLERS



BACK MOUNT PNEUMATIC LEVEL CONTROLLER MODEL PC PARTS DRAWING



All Pictures shown are for illustration purpose only. Actual product may vary due to product enhancement.



FLOAT OPERATED CONTROLLERS

BACK MOUNT PNEUMATIC LEVEL CONTROLLER MODEL PC PARTS LIST

| ITEM | QTY. | DESCRIPTION | PART NO | ITEM | QTY. | DESCRIPTION | PART NO |
|----------------|------|--------------------|------------|---|---------|----------------------------|----------|
| 1 | 6 | Screw | ◇ 7189 | 31 | 1 | O-Ring * | 5500V |
| 2 | 1 | Bottom Cap | ◇ 5450 | 32 | 1 | Tangent Arm | 6535 |
| 3 | 2 | O-Ring | ◇ * 5540V | 33 | 1 | Link Body | 6546 |
| 4 | 1 | Selector Pin | ◇ 5483 | 34 | 1 | Pull Pin Assembly | 6549 |
| 5 | 2 | Thumb Screw | ◇ 6780 | 35 | 1 | Screw | 2426 |
| 6 | 1 | Lock Washer | ◇ 4543 | 36 | 1 | Yoke | 6538 |
| 7 | 1 | Throttle Spring | ◇ * 5469 | 37 | 1 | Pivot Rod | 6534 |
| 8 | 1 | Switch Plate | ◇ 6799 | 38 | 1 | Wire | 6533 |
| 9 | 1 | Spring | ◇ * 7108 | 39 | 1 | Spring Assembly | |
| 10 | 1 | Spring Plate | ◇ 6551 | | | No Rod Extension | 6547 |
| 11 | 1 | Nut | ◇ 6555 | with Rod Extension | 6547L | | |
| 12 | 1 | Upper Cap | ◇ 6531 | 40 | 1 | Waggle Arm Housing | 6532 |
| 13 | 1 | Diaphragm Assembly | ◇ * 7102AS | 41 | 1 | Adjusting Knob | 6544 |
| 14 | 2 | Screw | ◇ 4918 | 42 | 1 | Set Screw | 5595 |
| 15 | 1 | Pilot Plug | ◇ * 112 | 43 | 1 | Screw | 6539 |
| 16 | 1 | Pilot Block | ◇ 7346 | 44 | 1 | Gasket | 6530 |
| 17 | 2 | O-Ring | ◇ * 647V | 45 | 1 | O-Ring * | 6552NP |
| 18 | 1 | Spring | ◇ * 5541 | 46 | 1 | Cover | 6511 |
| 19 | 1 | Spacer | ◇ 5475 | 47 | 2 | Lens | 5447 |
| 20 | 1 | O-Ring | ◇ * 920V | 48 | 2 | Retaining Ring | 5509 |
| 21 | 1 | Actuator Assembly | ◇ * 7096AS | 49 | 1 | Cover Screw | 6548 |
| 22 | 1 | Back Plate | 6510 | 50 | 1 | Teflon Seal Ring * | 5545 |
| 23 | 1 | Adjusting Screw | 6556 | 51 | 1 | O-Ring * | 855LTV |
| 24 | 1 | Retainer | 6542 | 52 | 1 | Waggle Arm | 7078S6AS |
| 25 | 2 | Screw | 6537 | 53 | 1 | Coupling | 5454 |
| 26 | 1 | Screw | 5485 | 54 | 1 | Rod Assembly | 7723A |
| 27 | 1 | Breather Plug | 147 | | | Optional 6" Arm Extension | 5543L6 |
| 28 | 2 | Gauge | 7156 | | | Optional 12" Arm Extension | 5543L12 |
| 29 | 1 | Filter | 5486 | Optional 18" Arm Extension | 5543L18 | | |
| 30 | 1 | Filter Cap | 5502 | | | | |
| Repair Kits | | | RMG | * These parts are recommended spare parts and stocked as repair kits. | | | |
| Pilot Assembly | | | YBU | ◇ These parts are stocked as Pilot Assembly | | | |

| ITEM | QTY. | DESCRIPTION | PART NUMBER | | | | | | | | | | |
|------|------|--------------|-------------|--------|--------|-----------|--------|-----------|--------|--------|--------|--------|------|
| | | | STANDARD | | | CORROSIVE | | | | | | | |
| | | | 2 INCH | 3 INCH | 4 INCH | 5 INCH | 6 INCH | 2 INCH | 3 INCH | 4 INCH | 5 INCH | 6 INCH | |
| 55 | 1 | Body | 2 INCH | 3 INCH | 4 INCH | 5 INCH | 6 INCH | 2 INCH | 3 INCH | 4 INCH | 5 INCH | 6 INCH | |
| | | MNPT | 6559 | ---- | ---- | ---- | ---- | 6559SS6 ‡ | ---- | ---- | ---- | ---- | ---- |
| | | 150RF | 5562BM | 5570BM | 5575BM | ---- | ---- | ---- | ---- | ---- | ---- | ---- | ---- |
| | | 300RF | 5563BM | 5555BM | 5576BM | ---- | ---- | ---- | ---- | ---- | ---- | ---- | ---- |
| | | 600RF | 5564BM | 5571BM | 5577BM | ---- | ---- | ---- | ---- | ---- | ---- | ---- | ---- |
| | | 900RF | ---- | 5572BM | ---- | ---- | ---- | ---- | ---- | ---- | ---- | ---- | ---- |
| | | 1500RF | 5565BM | 6414BM | 5579BM | ---- | ---- | ---- | ---- | ---- | ---- | ---- | ---- |
| | | 600RTJ | 5568BM | 5573BM | 5578BM | ---- | ---- | ---- | ---- | ---- | ---- | ---- | ---- |
| | | 900RTJ | ---- | 5574BM | ---- | ---- | ---- | ---- | ---- | ---- | ---- | ---- | ---- |
| | | 1500RTJ | 5569BM | ---- | ---- | ---- | ---- | ---- | ---- | ---- | ---- | ---- | ---- |
| | | Hammer Union | ---- | 5558BM | 5551BM | 5552BM | ---- | ---- | ---- | ---- | ---- | ---- | |

‡ Coated Parts available with "K" service type

| ITEM | QTY. | DESCRIPTION | PART NO | WEIGHT | MAX TEMP | MAX PSI | MIN DIFFERENTIAL SP.GR. | MATERIAL |
|------|------|---------------------|------------|-----------|----------|---------|-------------------------|----------|
| 56 | 1 | Displacers | | | | | | |
| | | 1 7/8" x 12" Lg | 7637A | 1lb 15oz | 180°F | 4000 | >0.20 | PVC |
| | | 1 7/8" x 20" Lg | 7638A | 3lb 5oz | 180°F | 4000 | >0.15 | PVC |
| | | 2 3/4" x 14 1/4" Lg | 7640A | 4lb 5oz | 180°F | 4000 | >0.1 | PVC |
| | | 2 1/2" x 12" Lg | 7639A | 3lb 0.5oz | 180°F | 4000 | >0.15 | PVC |
| | | 1 3/4" x 12" Lg | 5461SS6 | 1lb 15oz | 500°F | 2000 | >0.20 | 316SS |
| | | 1 3/4" x 20" Lg | 5461SS6L20 | 3lb 0oz | 500°F | 2000 | >0.17 | 316SS |

| EXTENSION RODS KITS | | | | |
|---------------------|--------|--------|----------|----------|
| Extension Kit | Length | Spring | Coupling | Arm Ext. |
| CMUL6 | 6" | 6547L | 5454 | 5543L6 |
| CMUL12 | 12" | 6547L | 5454 | 5543L12 |
| CMUL18 | 18" | 6547L | 5454 | 5543L18 |

NOTES:



Kimray is an ISO 9001- certified manufacturer.

APPLICATIONS:

Liquid level controller for oil and gas separators, water knock-outs, gas scrubbers and accumulators.

Liquid interface control in fluids of 0.20 minimum differential specific gravities with the standard displacer. Other displacers are available to control liquid interface to 0.10 minimum specific gravities.

FEATURES:

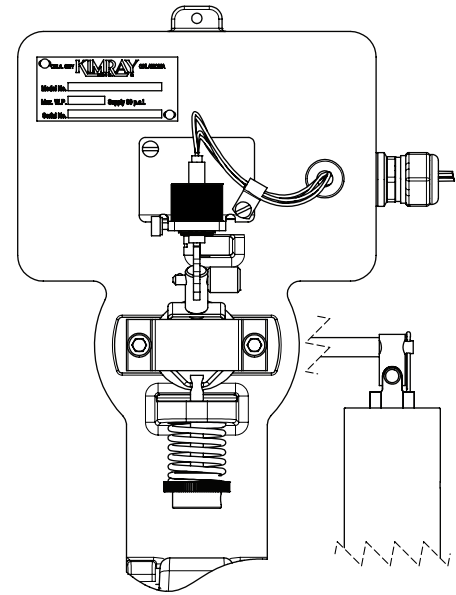
- Compact design
- Snap action
- Low Temp Process Seal (Std.) (-50°F to 300°F)
- Powder coated enclosure
- Vibration tough
- PVC Displacer (Std.) (4000 psi, 175°F);
- 316 SS Displacer (1500 psi, 350°F)
- Adjustment knob snap range (Patent Pending)
- 2 NAMURs Sensor (Intrinsically Safe, Class I Div 1)
- Type 3r Enclosure

POWER SPECS (6841 I.S. BARRIER):

- 10-30 VDC, ≤ 1.5W (Intrinsically Safe Barrier, Class I Div 2)
- Barrier output Relay Contacts: ≤ 2A @ 250 VAC / 120 VDC

CERTIFICATIONS:

- NACE MR0175 compliant Wetted Parts
 - Certification documents Available upon request, specify when ordering
- Kimray is an ISO 9001- certified manufacturer.



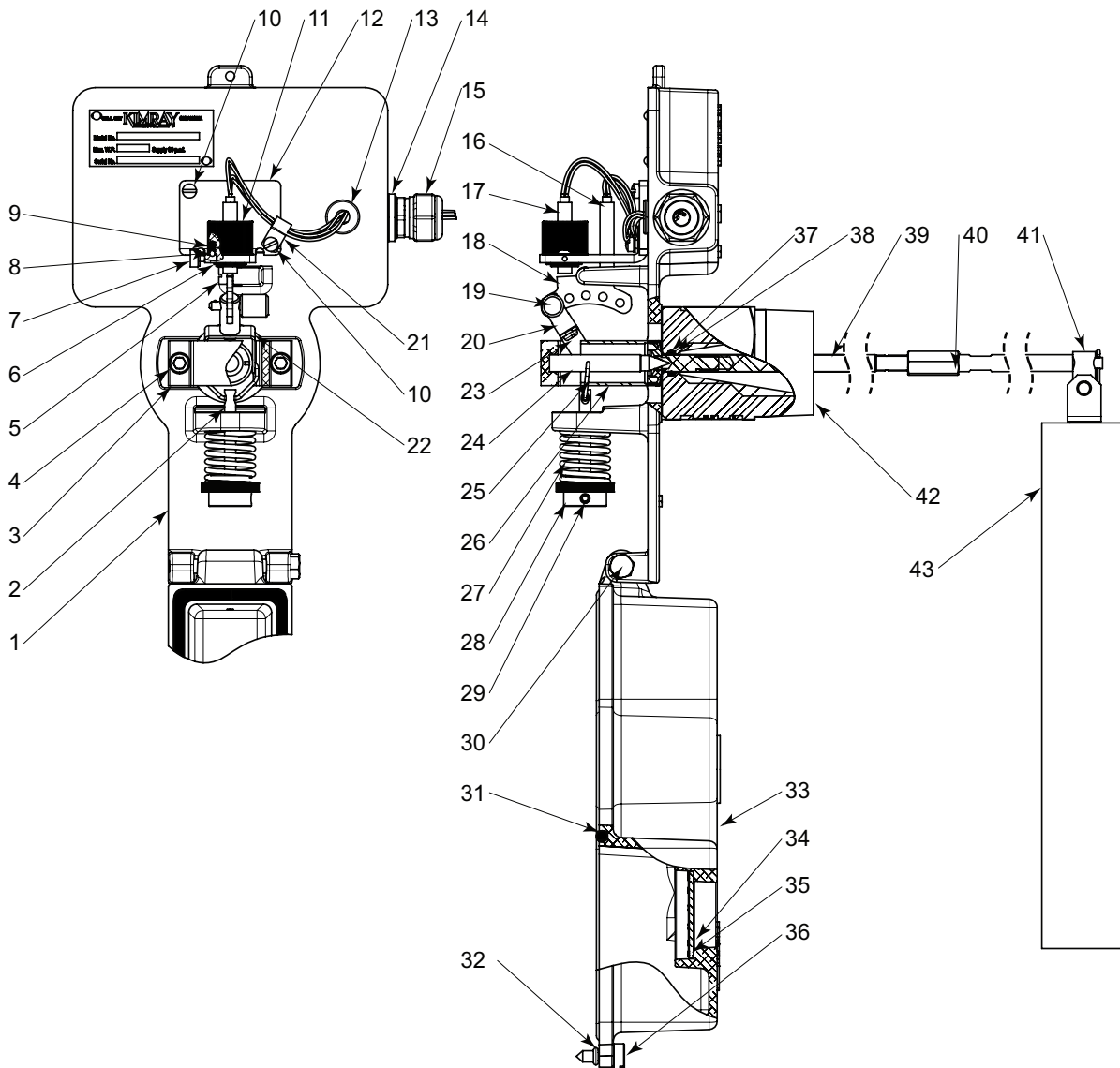
| Standard Configuration Code † | Order Code | Line Size | Connection Type | Mounting Type | Max. W.P. †† |
|-------------------------------|------------|-----------|-----------------|---------------|--------------|
| FEC2S4B1AS | CMME | 2" | NPT | Back Mount | 4000 |
| FEC2ARB1AS | COTE | | 150RF | | 285 |
| FEC3ARB1AS | CPBE | 3" | 150RF | | 285 |
| FEC4ARB1AS | CPJE | 4" | 150RF | | 285 |
| FEC5HUB1AS | CTOE | 5" | H.U. | | 1500 |

NOTES:

- For standard & optional seals, metals, material specifications & dimensions see technical data on pages 08:1 - 08:VII
- † For Corrosive service remove last "S" & replace with "C"
- † For KimCoat option remove last "S" & replace with "K"
- † For code builder see page 08:00.2
- †† Max W.P. values based on -20°F to 100°F.

FLOAT OPERATED CONTROLLERS

ELECTRONIC BACK MOUNT PNEUMATIC LEVEL CONTROLLER MODEL EC PARTS DRAWING



All Pictures shown are for illustration purpose only. Actual product may vary due to product enhancement.



FLOAT OPERATED CONTROLLERS

ELECTRONIC BACK MOUNT PNEUMATIC LEVEL CONTROLLER MODEL EC PARTS LIST

| ITEM | QTY. | DESCRIPTION | PART NO | ITEM | QTY. | DESCRIPTION | PART NO | |
|------|------|---------------------|---------|---|------|--------------------|----------------------------|----------------------------|
| 1 | 1 | Back Plate | 6806 | 25 | 1 | Wire | 6533 | |
| 2 | 1 | Adjusting Screw | 6556 | 26 | 1 | Waggle Arm Housing | 6532 | |
| 3 | 1 | Retainer | 6542 | 27 | 1 | Spring | | |
| 4 | 2 | Screw | 6537 | | | No Rod Extension | 6547 | |
| 5 | 1 | Screw | 5485 | | | with Rod Extension | 6547L | |
| 6 | 1 | Snap Ring | 6803 | 28 | 1 | Adjusting Knob | 6544 | |
| 7 | 1 | Thumb Screw | 6847 | 29 | 1 | Set Screw | 5595 | |
| 8 | 1 | Detent Ball | 2202B | 30 | 1 | Screw | 6539 | |
| 9 | 1 | Spring | 4203 | 31 | 1 | Gasket | 6530 | |
| 10 | 2 | Screw | 1081 | 32 | 1 | O-Ring | 6552NP | |
| 11 | 1 | Adjustment Knob | 6807 | 33 | 1 | Cover | 6511 | |
| 12 | 1 | Mounting Plate | 6809 | 34 | 2 | Lens | 5447 | |
| 13 | 1 | Grommet | 6804 | 35 | 2 | Retaining Ring | 5509 | |
| 14 | 1 | Bushing | 6849 | 36 | 1 | Cover Screw | 6548 | |
| 15 | 1 | Cord Grip | 6850 | 37 | 1 | Teflon Seal Ring | * 5545 | |
| 16 | 1 | Rear Sensor (black) | 6805 | 38 | 1 | O-Ring | * 855LTV | |
| 17 | 1 | Front Sensor (red) | 6808 | 39 | 1 | Waggle Arm | 7078S6AS | |
| 18 | 1 | Tangent Arm | 6535 | 40 | 1 | Coupling | 5454 | |
| 19 | 1 | Pull Pin Assy | 6549 | 41 | 1 | Rod Assembly | PVC 7723A | |
| 20 | 1 | Link Body | 6546 | | | | | SS6 5453V |
| 21 | 1 | Cord Clamp | 6846 | | 1 | | Optional 6" Arm Extension | 5543L6 |
| 22 | 1 | Yoke | 6538 | | | | | Optional 12" Arm Extension |
| 23 | 1 | Screw | 2426 | | | | Optional 18" Arm Extension | 5543L18 |
| 24 | 1 | Pivot Rod | 6534 | * These parts are recommended spare parts | | | | |

| ITEM | QTY. | DESCRIPTION | PART NUMBER | | | | | | | | | | | |
|------|------|--------------|-------------|--------|--------|--------|--------|-----------|-----------|--------|--------|--------|------|--|
| | | | STANDARD | | | | | | CORROSIVE | | | | | |
| | | | 2 INCH | 3 INCH | 4 INCH | 5 INCH | 6 INCH | 2 INCH | 3 INCH | 4 INCH | 5 INCH | 6 INCH | | |
| 42 | 1 | Body | 2 INCH | 3 INCH | 4 INCH | 5 INCH | 6 INCH | 2 INCH | 3 INCH | 4 INCH | 5 INCH | 6 INCH | | |
| | | MNPT | 6559 | ---- | ---- | ---- | ---- | 6559SS6 ‡ | ---- | ---- | ---- | ---- | ---- | |
| | | 150RF | 5562BM | 5570BM | 5575BM | ---- | ---- | ---- | ---- | ---- | ---- | ---- | ---- | |
| | | 300RF | 5563BM | 5555BM | 5576BM | ---- | ---- | ---- | ---- | ---- | ---- | ---- | ---- | |
| | | 600RF | 5564BM | 5571BM | 5577BM | ---- | ---- | ---- | ---- | ---- | ---- | ---- | ---- | |
| | | 900RF | ---- | 5572BM | ---- | ---- | ---- | ---- | ---- | ---- | ---- | ---- | ---- | |
| | | 1500RF | 5565BM | 6414BM | 5579BM | ---- | ---- | ---- | ---- | ---- | ---- | ---- | ---- | |
| | | 600RTJ | 5568BM | 5573BM | 5578BM | ---- | ---- | ---- | ---- | ---- | ---- | ---- | ---- | |
| | | 900RTJ | ---- | 5574BM | ---- | ---- | ---- | ---- | ---- | ---- | ---- | ---- | ---- | |
| | | 1500RTJ | 5569BM | ---- | ---- | ---- | ---- | ---- | ---- | ---- | ---- | ---- | ---- | |
| | | Hammer Union | ---- | 5558BM | 5551BM | 5552BM | ---- | ---- | ---- | ---- | ---- | ---- | | |

‡ Coated Parts available with "K" service type

| ITEM | QTY. | DESCRIPTION | PART NO | WEIGHT | MAX TEMP | MAX PSI | MIN DIFFERENTIAL SP.GR. | MATERIAL |
|------|------|---------------------|------------|-----------|----------|---------|-------------------------|----------|
| 43 | 1 | Displacers | | | | | | |
| | | 1 7/8" x 12" Lg | 7637A | 1lb 15oz | 180°F | 4000 | >0.20 | PVC |
| | | 1 7/8" x 20" Lg | 7638A | 3lb 5oz | 180°F | 4000 | >0.15 | PVC |
| | | 2 3/4" x 14 1/4" Lg | 7640A | 4lb 5oz | 180°F | 4000 | >0.1 | PVC |
| | | 2 1/2" x 12" Lg | 7639A | 3lb 0.5oz | 180°F | 4000 | >0.15 | PVC |
| | | 1 3/4" x 12" Lg | 5461SS6 | 1lb 15oz | 500°F | 2000 | >0.20 | 316SS |
| | | 1 3/4" x 20" Lg | 5461SS6L20 | 3lb 0oz | 500°F | 2000 | >0.17 | 316SS |

| EXTENSION RODS KITS | | | | |
|---------------------|--------|--------|----------|----------|
| Extension Kit | Length | Spring | Coupling | Arm Ext. |
| CMUL6 | 6" | 6547L | 5454 | 5543L6 |
| CMUL12 | 12" | 6547L | 5454 | 5543L12 |
| CMUL18 | 18" | 6547L | 5454 | 5543L18 |

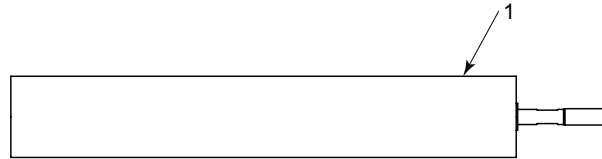
All Pictures shown are for illustration purpose only. Actual product may vary due to product enhancement.

NOTES:

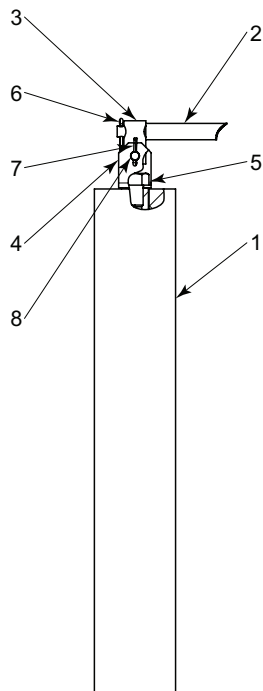


Kimray is an ISO 9001- certified manufacturer.

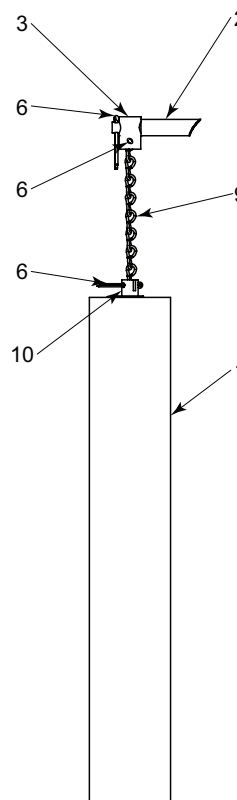
HORIZONTAL (STD.)



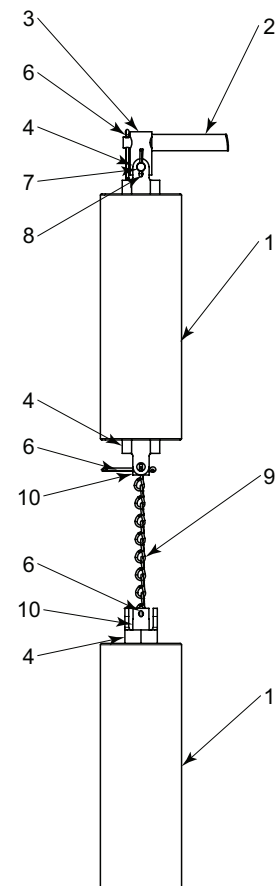
VERTICAL (STD.)



HANGING



SPLIT FLOAT



| ITEM | DESCRIPTION | HORIZONTAL (STD.) | | VERTICAL (STD.) | | HANGING | | SPLIT | |
|------------|---------------------|-------------------|------|-----------------|------|---------|------|---------|------|
| | | PART NO | QTY. | PART NO | QTY. | PART NO | QTY. | PART NO | QTY. |
| 1 | Displacer | 7637A | 1 | 7637A | 1 | 6562 | 1 | 5560 | 2 |
| 2 | Displacer ARM | | | 5453 | 1 | 5453 | 1 | 5453 | 1 |
| 3 | Hanger Block | | | 6541 | 1 | 5546SS6 | 1 | 6541 | 1 |
| 4 | U Bracket / Bushing | | | 7577 | 1 | | 1 | 6557SS6 | 3 |
| 5 | Bolt | | | 7696S6 | 1 | | | | |
| 6 | Cotter Pin | | | 363 | 1 | 363 | 3 | 363 | 3 |
| 7 | Clevis Pin | | | 7168 | 1 | | | 7168 | 1 |
| 8 | Cotter Pin | | | 7169 | 1 | | | 7169 | 1 |
| 9 | Chain | | | | | * 2826 | 1 | * 2826 | 1 |
| 10 | Screw | | | | | 5547SS6 | 1 | 5547SS6 | 2 |
| Kit Number | | | | | | CMQ | | CMP | |

* Part 2826 chain comes in 8 foot length

All Pictures shown are for illustration purpose only. Actual product may vary due to product enhancement.

NOTES:



Kimray is an ISO 9001- certified manufacturer.

APPLICATION:

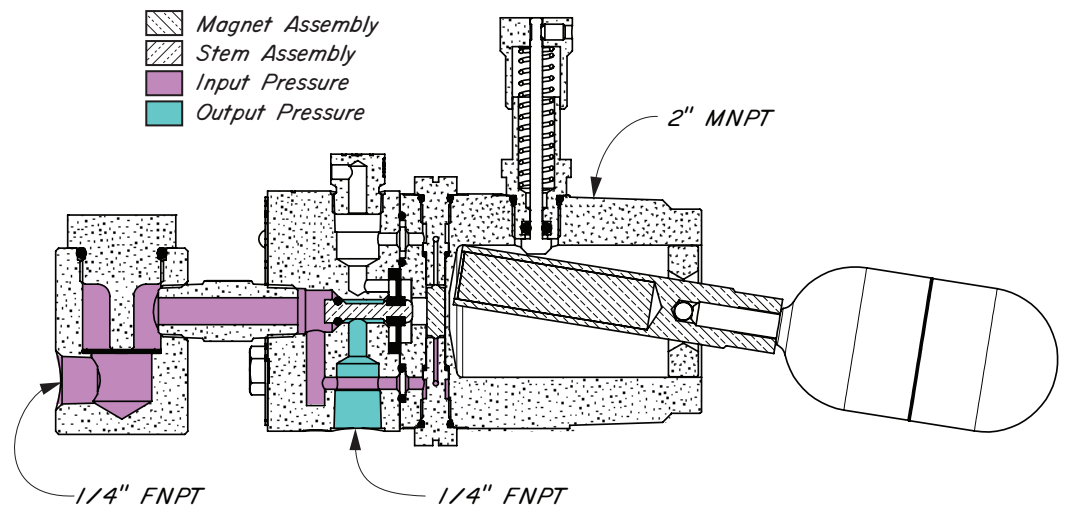
Liquid level switch for oil and gas separators, water knock-outs, gas scrubbers and accumulators.

FEATURES:

- Manual override for testing
- Standard and extended float options operate in 0.5 specific gravity
- Designed for harsh gas compressor scrubber applications
- Snap acting
- Direct acting (Field reversible to Indirect acting)
- Flow Rate 420 SCFH @ 30psig

CERTIFICATIONS:

- Canadian Registration Number (CRN):
0H13594.2134567890NTY
 - NACE MR0175 process standard
 - NACE MR0175 compliant wetted parts
 - Certification documents available upon request, specify when ordering
- Kimray is an ISO 9001- certified manufacturer.



| Standard Configuration Code † | Order Code | Line Size | Connection Type | Supply Press. psig | Max. W.P. psig †† |
|-------------------------------|------------|-----------|-----------------|--------------------|-------------------|
| FPS2S4WSAS | CUA | 2" | NPT | 15-75 | 2000 |
| FPX2S4WSAS | CUAEXT | | | | |

NOTES:

For standard & optional seals, metals, material specifications & dimensions see technical data on pages 08:I - 08:VII

† For Corrosive service remove last "S" & replace with "C"

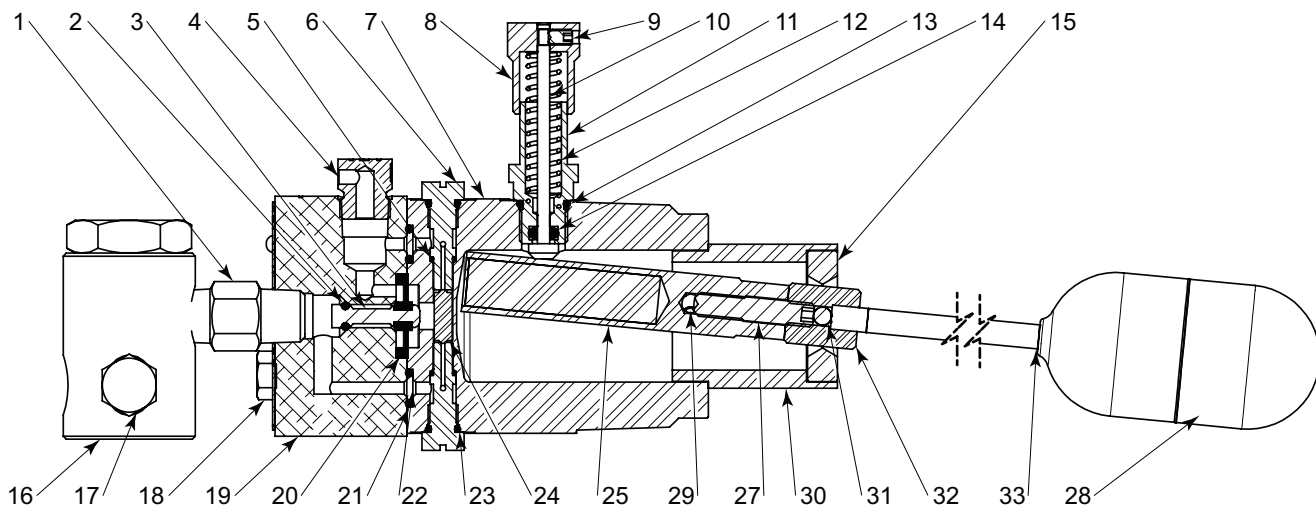
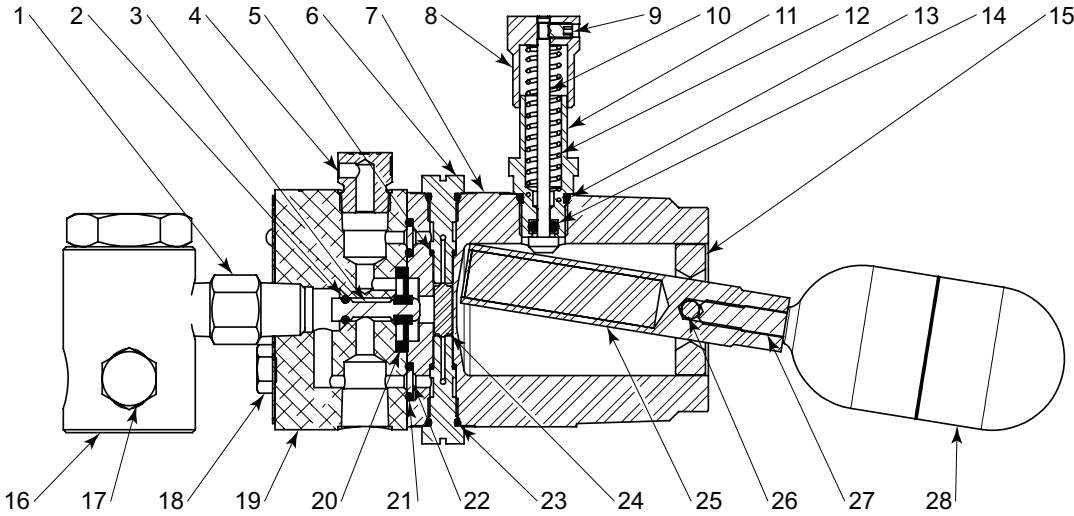
† For code builder see page 08:00.3

†† Max W.P. values based on -20°F to 100°F.

FLOAT OPERATED CONTROLLERS



PNEUMATIC LEVEL SWITCH MODEL PS & PX PARTS DRAWING & LIST



| ITEM | QTY. | DESCRIPTION | PART NO. | | ITEM | QTY. | DESCRIPTION | PART NO. | |
|------|------|------------------|----------|-----------|------|------|-----------------|----------|-----------|
| | | | STANDARD | CORROSIVE | | | | STANDARD | CORROSIVE |
| 1 | 1 | Nipple | 648 | 648SS6 | 19 | 1 | Pilot Body | 6984 | 6984 |
| 2 | 1 | O-Ring * | 7016V | 7016V | 20 | 1 | Diaphragm * | 6994V | 6994V |
| 3 | 1 | Stem | 6986 | 6986 | 21 | 2 | O-Ring * | 7524V | 7524V |
| 4 | 1 | Breather Plug | 147 | 147SS6 | 22 | 2 | Disc Filter * | 7012 | 7012 |
| 5 | 2 | O-Ring * | 7015V | 7015V | 23 | 2 | O-Ring * | 7019V | 7019V |
| 6 | 2 | Seat | 6990 | 6990 | 24 | 1 | Shuttle | 6996 | 6996 |
| 7 | 1 | Housing | 7549 | 7549 | 25 | 1 | Float Lever | 7017S6 | 7017S6 |
| 8 | 1 | Push Cap | 5417 | 5417 | 26 | 1 | Pivot Pin | 7020 | 7020 |
| 9 | 1 | Set Screw | 5426 | 5426 | 27 | 1 | Set Screw | 6851 | 6851 |
| 10 | 1 | Stem | 5419 | 5419 | 28 | 1 | SS6 Float | 3216 | 3216 |
| 11 | 1 | Override Fitting | 7548 | 7548 | | | Poly Float | 5431 | 5431 |
| 12 | 1 | Spring | 5429 | 5429 | 29 | 2 | Roll Pin | 7469 | 7469 |
| 13 | 1 | O-Ring * | 7584V | 7584V | 30 | 1 | Housing | 7470S6 | 7470S6 |
| 14 | 1 | O-Ring * | 5410V | 5410V | 31 | 1 | Pivot Pin | 7468 | 7468 |
| 15 | 1 | Annulus Plug | 7145 | 7145 | 32 | 1 | Coupler | 7471S6 | 7471S6 |
| 16 | 1 | Filter 1/4 F30 | YAS | YASSS6 | 33 | 1 | Float Extension | 7482S6 | 7482S6 |
| 17 | 1 | Plug | 699 | 699SS6 | | | Repair Kits | RZX | RZX |
| 18 | 2 | Screw | 7024 | 7024 | | | | | |

* These parts are recommended spare parts and are stocked as repair kits.

All Pictures shown are for illustration purpose only. Actual product may vary due to product enhancement.

APPLICATION:

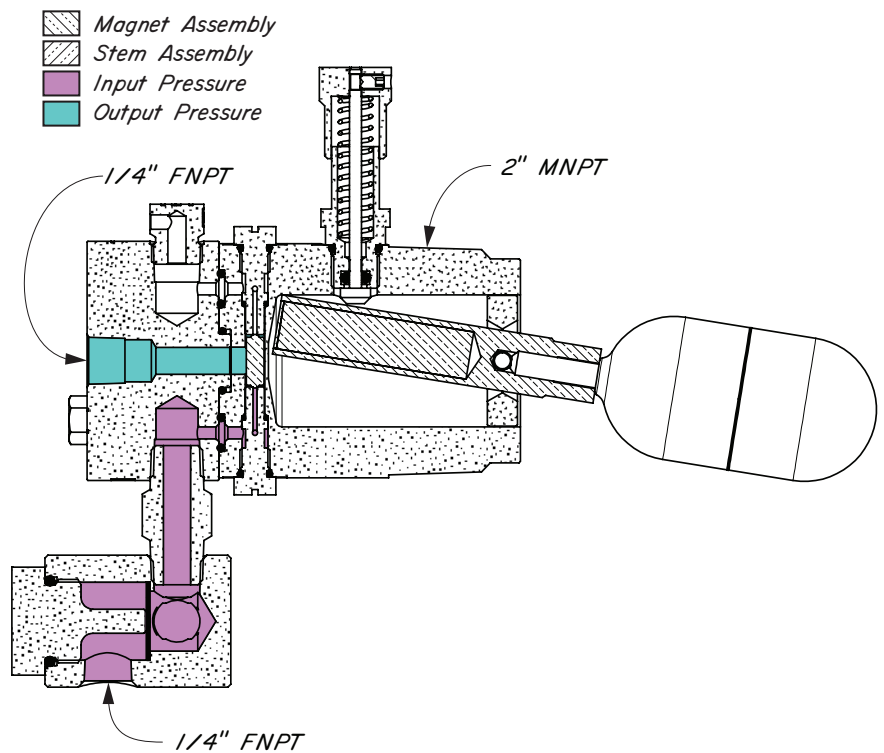
Liquid level switch for oil and gas separators, water knock-outs, gas scrubbers and accumulators.

FEATURES:

- Manual override for testing
- Float operates in 0.5 specific gravity
- Designed for harsh gas compressor scrubber applications
- Snap Acting
- Flow Rate 17 SCFH @ 30psig
- 36 SCFH @ 75psig

CERTIFICATIONS:

- Canadian Registration Number (CRN):
0H13594.2134567890NTY
 - NACE MR0175 compliant wetted parts
 - Certification documents available upon request, specify when ordering
- Kimray is an ISO 9001- certified manufacturer.



| Standard Configuration Code † | Order Code | Line Size | Connection Type | Supply Press. psig | Max. W.P. psig †† |
|-------------------------------|------------|-----------|-----------------|--------------------|-------------------|
| FPK2S4WSAS | CUB | 2" | NPT | 0-75 | 2000 |

NOTES:

For standard & optional seals, metals, material specifications & dimensions see technical data on pages 08:I - 08:VII

† For Corrosive service remove last "S" & replace with "C"

† For code builder see page 08:00.3

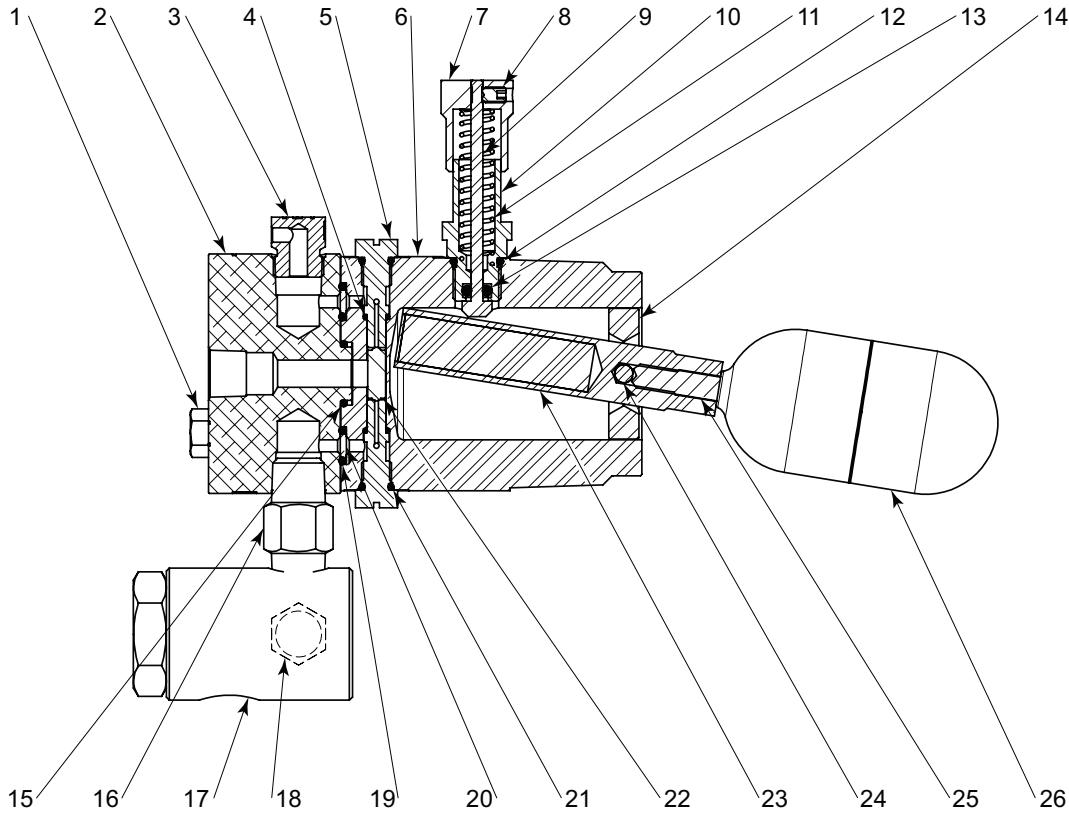
†† Max W.P. values based on -20°F to 100°F.

All Pictures shown are for illustration purpose only. Actual product may vary due to product enhancement.

FLOAT OPERATED CONTROLLERS



PNEUMATIC LEVEL SWITCH NO RELAY MODEL PK PARTS DRAWING & LIST



| ITEM | QTY. | DESCRIPTION | PART NO. | | ITEM | QTY. | DESCRIPTION | PART NO. | |
|------|------|------------------|----------|-----------|------|------|----------------|----------|-----------|
| | | | STANDARD | CORROSIVE | | | | STANDARD | CORROSIVE |
| 1 | 2 | Screw | 7024 | 7024 | 15 | 1 | O-Ring * | 3026V | 3026V |
| 2 | 1 | Pilot Body | 7248 | 7248 | 16 | 1 | Nipple | 648 | 648SS6 |
| 3 | 1 | Breather Plug | 147 | 147SS6 | 17 | 1 | Filter 1/4 F30 | YAS | YASSS6 |
| 4 | 2 | O-Ring * | 7015V | 7015V | 18 | 1 | Plug | 699 | 699SS6 |
| 5 | 2 | Seat | 6990 | 6990 | 19 | 2 | O-Ring * | 7524V | 7524V |
| 6 | 1 | Housing | 7549 | 7549 | 20 | 2 | Disc Filter * | 7012 | 7012 |
| 7 | 1 | Push Cap | 5417 | 5417 | 21 | 2 | O-Ring * | 7019V | 7019V |
| 8 | 1 | Set Screw | 5426 | 5426 | 22 | 1 | Shuttle | 6996 | 6996 |
| 9 | 1 | Stem | 5419 | 5419 | 23 | 1 | Float Lever | 7017S6 | 7017S6 |
| 10 | 1 | Override Fitting | 7548 | 7548 | 24 | 1 | Pivot Pin | 7020 | 7020 |
| 11 | 1 | Spring | 5429 | 5429 | 25 | 1 | Set Screw | 6851 | 6851 |
| 12 | 1 | O-Ring * | 7584V | 7584V | 26 | 1 | SS6 Float | 3216 | 3216 |
| 13 | 1 | O-Ring * | 5410V | 5410V | | | Poly Float | 5431 | 5431 |
| 14 | 1 | Annulus Plug | 7145 | 7145 | | | Repair Kits | RZX | RZX |

* These parts are recommended spare parts and are stocked as repair kits.

ELECTRONIC LEVEL SWITCH MODEL ES, EL & EV

APPLICATIONS:

Senses a specific liquid level and produces electric output.
High or low level control.
Electric output can activate alarms, solenoid valves or other electrically switched devices.

FEATURES:

316 SS Wetted Parts
Sealed Hermetic Reed Switch
SPDT Reed Switch
CSA Certificate #1662451, USA and Canada
Expl. Proof – Class I, Div 1, Groups A,B,C,D
• Class II, Groups E,F,G, Class III
• Class I, Zone 1, AExdIIC, ExdIIC
• (Stainless steel float only)
• Additional seal not required
NEMA4X
Available with manual override for testing.
Minimum Specific Gravity 0.4.

CERTIFICATIONS:

NACE MR0175 compliant Wetted Parts
• documents available upon request, specify when ordering
Canadian Registration Number (CRN):
0H11305.2134567890NTY
Kimray is an ISO 9001- certified manufacturer.

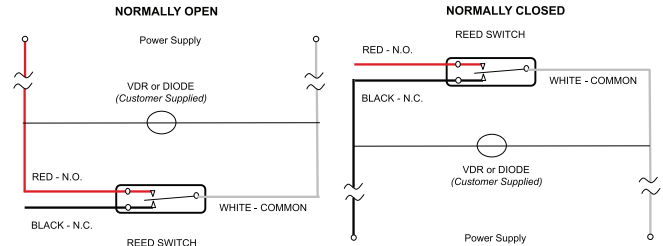
ELECTRICAL RATINGS:

STD POWER: 3W MIN, 100W MAX
0.83A @ 120VAC
2A @ 50VDC
3A MAXIMUM
LOW POWER : 25W MAX
0.2A @ 120VAC
1A @ 25VDC
1A MAXIMUM

WIRING INSTRUCTIONS:

Do not exceed the amperage and voltage for the switch.
Switch contacts may experience damage in applications using relays, motors, etc. where a power surge or voltage spike may occur during relay engagement or motor startups. For these conditions a shunt path for over-voltage should be installed.

- For DC applications:
use an (1N4001) or similar diode wired in parallel as shown.
- For AC applications:
use a 110 VAC Varistor (Digi-Key BC1408-ND) or similar wired in parallel as shown.



RED - Normally Open
BLACK - Normally Closed
WHITE - Common



| Standard Configuration Code † | Order Code | Line Size | Connection Type | Max. W.P. †† psig | Float | Override | Power |
|-------------------------------|------------|-----------|-----------------|-------------------|-------|----------|----------|
| FES1S4NSAS | CEB1 | 1 1/2" | NPT | 2000 | SS6 | No | Standard |
| FES2S4NSAS | CEC1 | 2" | | | | No | |
| FES1S4WSAS | CEB2 | 1 1/2" | | | | Yes | |
| FES2S4WSAS | CEC2 | 2" | | | | Yes | |
| FES1S4NPAS | CEB1PP | 1 1/2" | | 5000 | HDPE | No | |
| FES2S4NPAS | CEC1PP | 2" | | | | No | |
| FES1S4WPAS | CEB2PP | 1 1/2" | | | | Yes | |
| FES2S4WPAS | CEC2PP | 2" | | | | Yes | |
| FEV2S4NSAS | CEC1VRT | 2" | | 2000 | SS6 | No | Low PWR |
| FEV2S4WSAS | CEC2VRT | 2" | | | | Yes | |
| FEL1S4NSAS | CEB1LPW | 1 1/2" | | | | No | |
| FEL2S4NSAS | CEC1LPW | 2" | | | | No | |
| FEL1S4WSAS | CEB2LPW | 1 1/2" | | 5000 | HDPE | Yes | |
| FEL2S4WSAS | CEC2LPW | 2" | | | | Yes | |
| FEL1S4NPAS | CEB1LPWPP | 1 1/2" | | | | No | |
| FEL2S4NPAS | CEC1LPWPP | 2" | | | | No | |
| FEL1S4WPAS | CEB2LPWPP | 1 1/2" | 2000 | HDPE | Yes | | |
| FEL2S4WPAS | CEC2LPWPP | 2" | | | Yes | | |

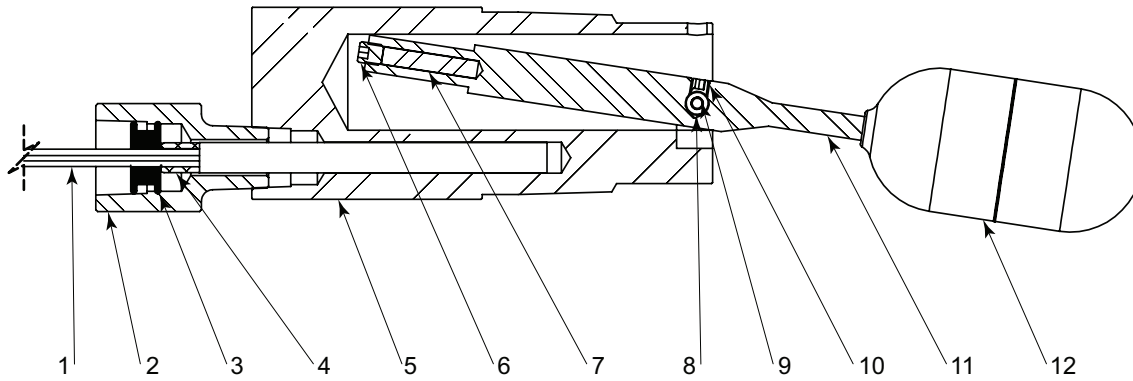
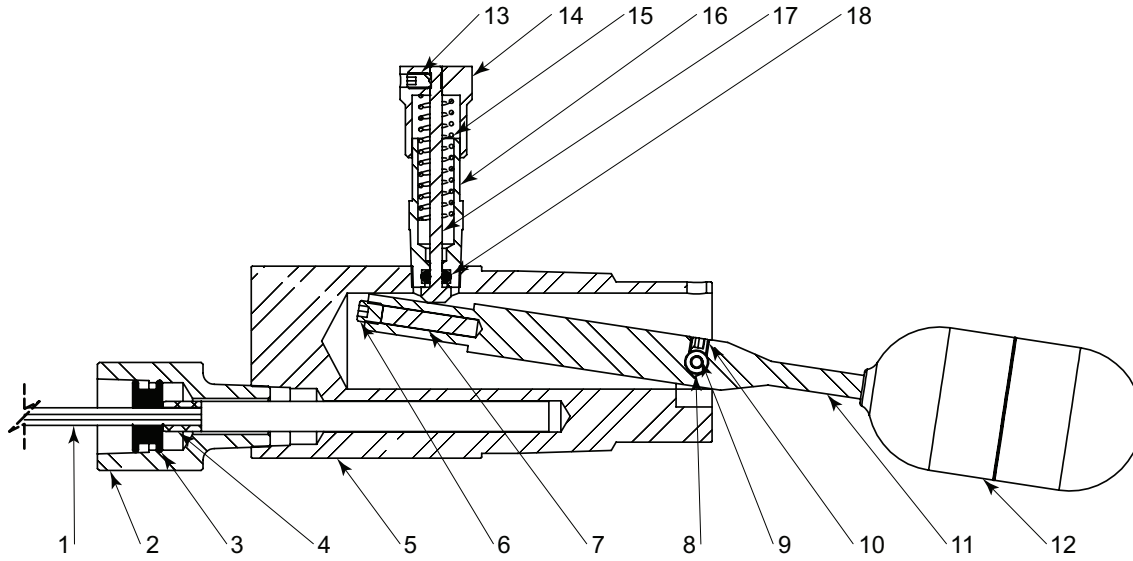
NOTES:

For standard & optional seals, metals, material specifications & dimensions see technical data on pages 08:I - 08:VII
† For code builder see page 08:00.3
†† Max W.P. values based on -20°F to 100°F.

FLOAT OPERATED CONTROLLERS



ELECTRIC LEVEL SWITCH (HORIZONTAL) MODEL ES & EL PARTS DRAWING & LIST



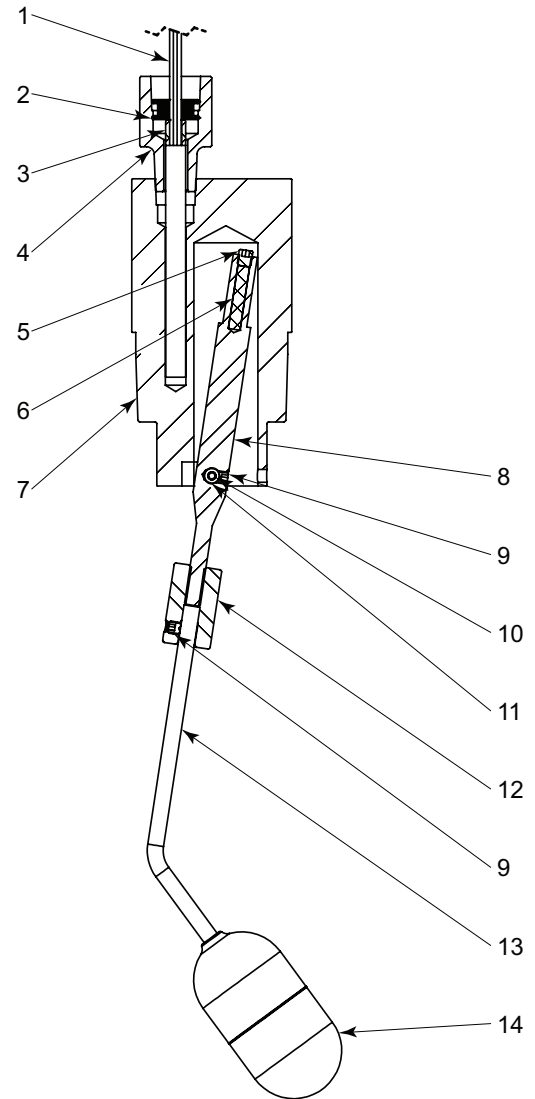
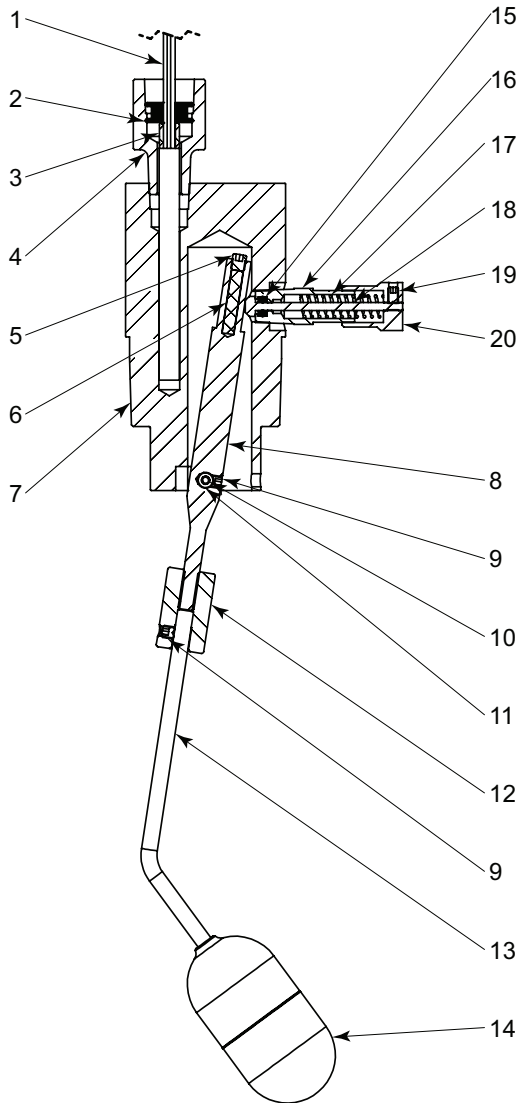
| ITEM | QTY. | DESCRIPTION | PART NO. |
|------|------|-----------------------------|----------|
| 1 | 1 | Switch Cartridge Standard | 5413 |
| | | Switch Cartridge Low Power | 5413R |
| 2 | 1 | Conduit Adaptor | 5414 |
| 3 | 1 | Grommet | 5424 |
| 4 | 1 | Grommet Insert | 5423 |
| 5 | 1 | 1 1/2" Body (with override) | 5421 |
| | | 2" Body (with override) | 5433 |
| | | 1 1/2" Body (no override) | 5425 |
| | | 2" Body (no override) | 5434 |
| 6 | 1 | Set Screw | 5593 |
| 7 | 1 | Magnet | 3206 |
| 8 | 2 | Lever Spacer | 5416 |
| | | Lever Pin (1 1/2" Body) | 5415 |
| 9 | 1 | Lever Pin (2" Body) | 5432 |
| | | Lever Pin (2" Body) | 5432 |
| 10 | 1 | Set Screw | 2446 |
| 11 | 1 | Float Lever | 5420 |
| 12 | 1 | SS6 Float | 3216 |
| | | Poly Float | 5431 |

| OPTIONAL MANUAL OVERRIDE | | | |
|--------------------------|------|------------------|----------|
| ITEM | QTY. | DESCRIPTION | PART NO. |
| 13 | 1 | Set Screw | 5426 |
| 14 | 1 | Push Cap | 5417 |
| 15 | 1 | Spring | 5429 |
| 16 | 1 | Override Fitting | 5418 |
| 17 | 1 | Stem | 5419 |
| 18 | 1 | O-Ring | 5410V |

| ACCESSORIES | |
|---------------------------|----------|
| DESCRIPTION | PART NO. |
| Manual Override Assembly | 5418A |
| Pull Assembly w/20' Cable | 5587A |
| Annulus Plug | 5594 |

All Pictures shown are for illustration purpose only. Actual product may vary due to product enhancement.

ELECTRIC LEVEL SWITCH (VERTICAL) MODEL EV PARTS DRAWING & LIST



| ITEM | QTY. | DESCRIPTION | PART NO. |
|------|------|-----------------------------|----------|
| 1 | 1 | Switch Cartridge | 5413 |
| 4 | 1 | Conduit Adaptor | 5414 |
| 2 | 1 | Grommet | 5424 |
| 3 | 1 | Grommet Insert | 5423 |
| 7 | 1 | 1 1/2" Body (with override) | 5421 |
| | | 2" Body (with override) | 5433 |
| | | 1 1/2" Body (no override) | 5425 |
| | | 2" Body (no override) | 5434 |
| 5 | 1 | Set Screw | 5593 |
| 6 | 1 | Magnet | 3206 |
| 11 | 2 | Lever Spacer | 5416 |
| | | Lever Pin (1 1/2" Body) | 5415 |
| 10 | 1 | Lever Pin (2" Body) | 5432 |
| | | Lever Pin (1 1/2" Body) | 5415 |
| 9 | 2 | Set Screw | 2446 |
| 8 | 1 | Float Lever | 5420 |
| 12 | 1 | Coupling | 7467 |
| 13 | 1 | Extension | 7466 |
| 14 | 1 | SS6 Float | 3216 |
| | | Poly Float | 5431 |

| OPTIONAL MANUAL OVERRIDE | | | |
|--------------------------|------|------------------|----------|
| ITEM | QTY. | DESCRIPTION | PART NO. |
| 15 | 1 | O-Ring | 5410V |
| 16 | 1 | Override Fitting | 5418 |
| 17 | 1 | Spring | 5429 |
| 18 | 1 | Stem | 5419 |
| 19 | 1 | Set Screw | 5426 |
| 20 | 1 | Push Cap | 5417 |

| ACCESSORIES | |
|--------------------------|----------|
| DESCRIPTION | PART NO. |
| Manual Override Assembly | 5418A |
| Annulus Plug | 5594 |

All Pictures shown are for illustration purpose only. Actual product may vary due to product enhancement.

NOTES:

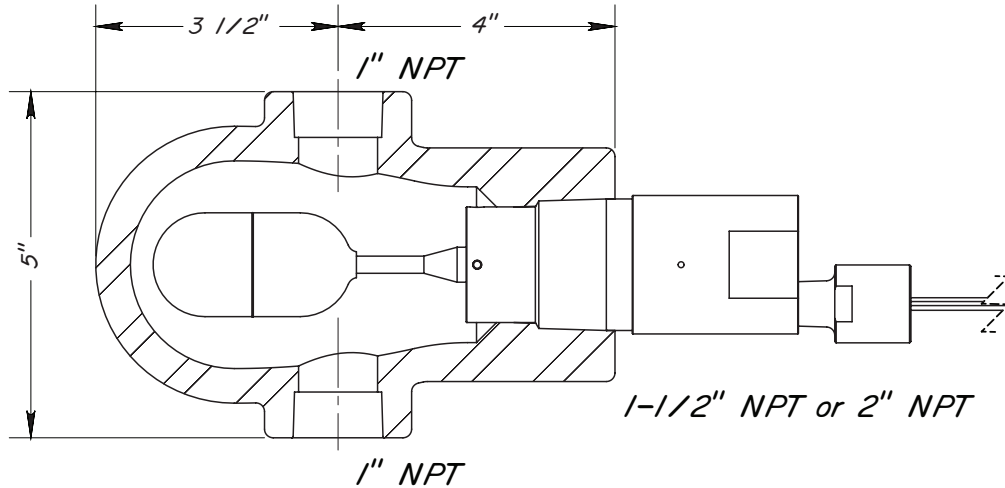


Kimray is an ISO 9001- certified manufacturer.

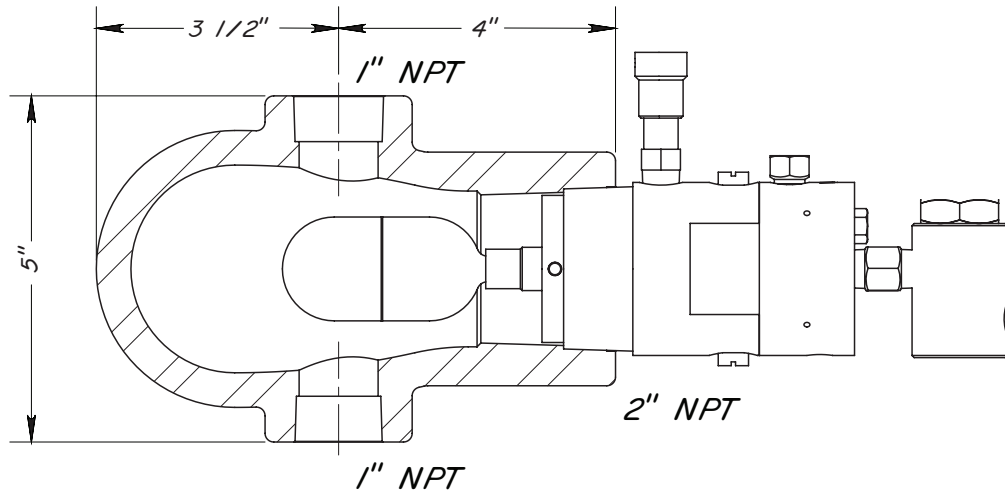
CERTIFICATIONS:

Canadian Registration Number (CRN):
 0F05370.2134567890NTY (External Float Cage)
 0H13594.2134567890NTY (Pneumatic Level Switch)
 NACE MR0175 compliant material: ASME SA-352-LCB
 Kimray is an ISO 9001- certified manufacturer.

ELECTRONIC



PNEUMATIC



| Part No. | Line Size | Connection Type | Temp Range | Max. W.P. †† |
|----------|-----------|-----------------|-------------|--------------|
| 5522 | 1 1/2" | NPT | -50F - 500F | 4000 |
| 5523 | 2" | NPT | -50F - 500F | 4000 |

NOTES:

For standard & optional seals, metals, material specifications & dimensions see technical data on pages 08:1 - 08:VII

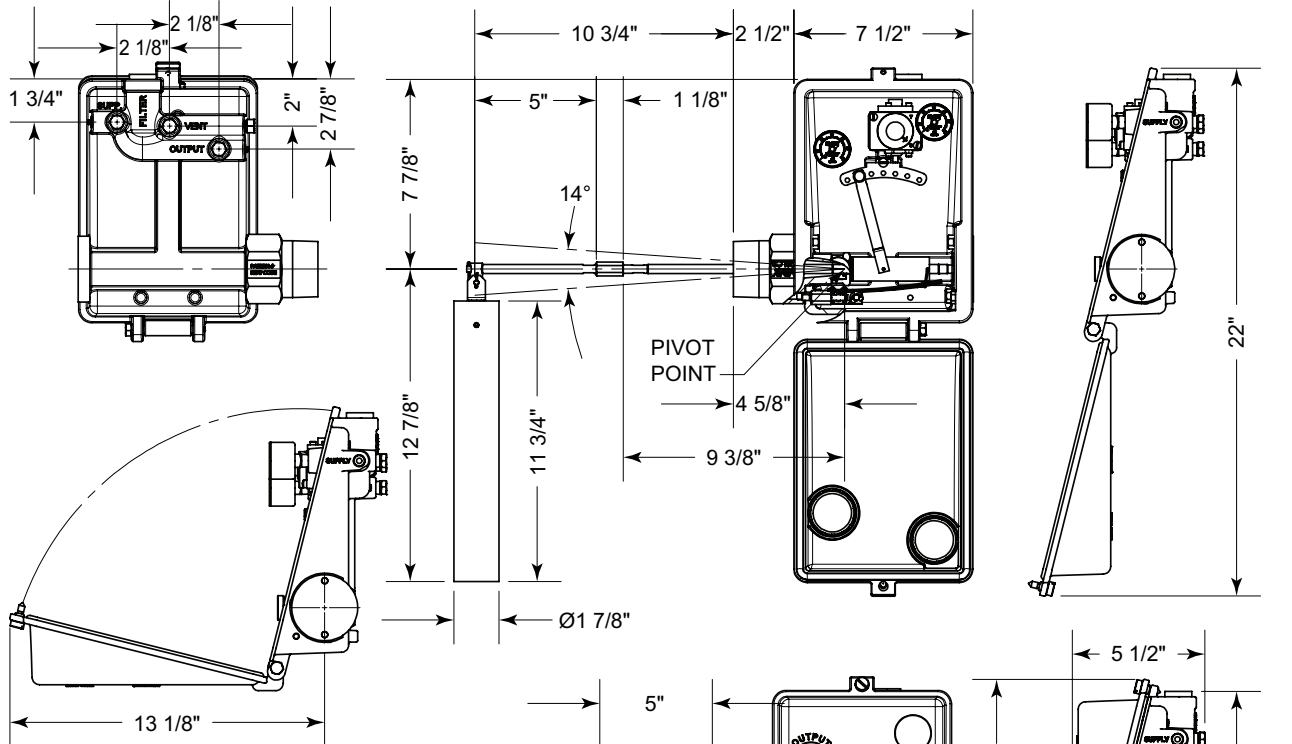
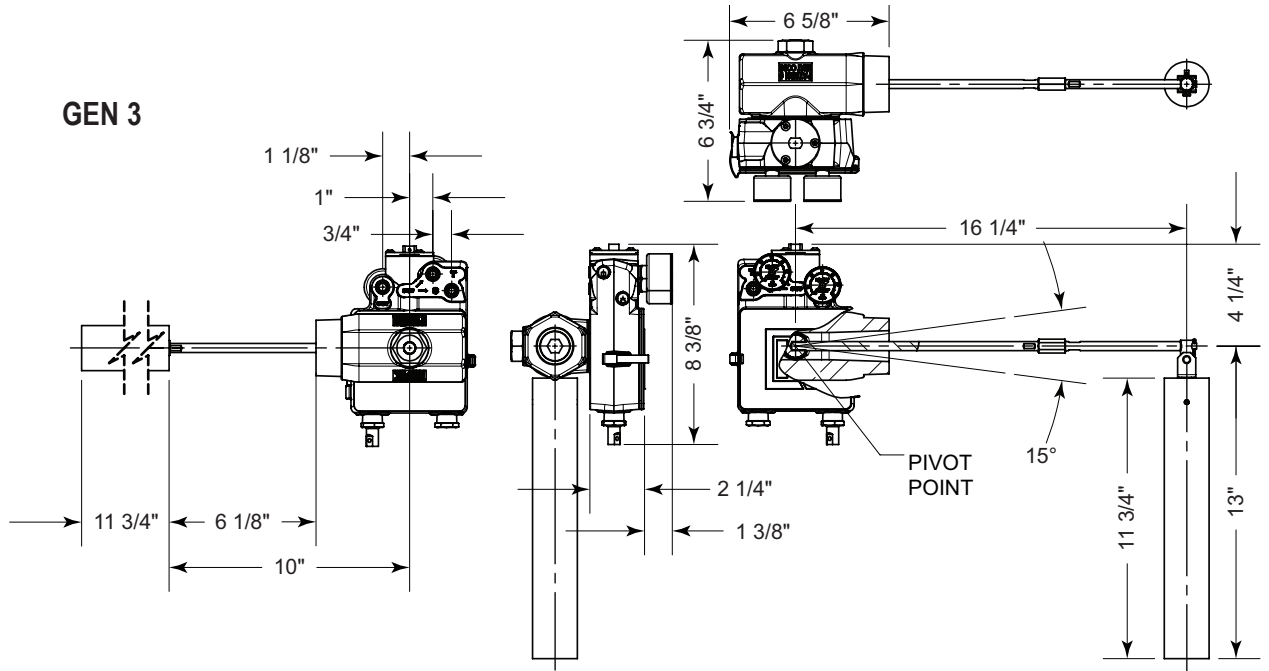
†† Max W.P. values based on -20°F to 100°F.

NOTES:

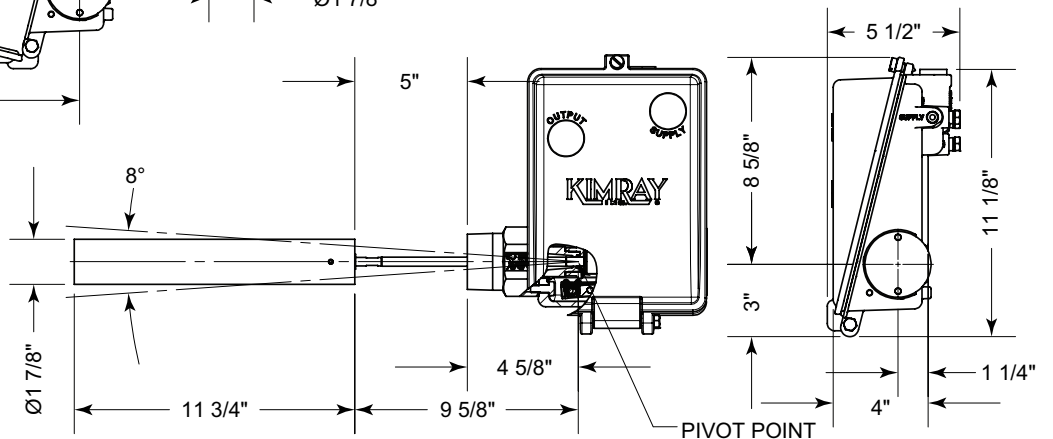


Kimray is an ISO 9001- certified manufacturer.

GEN 3



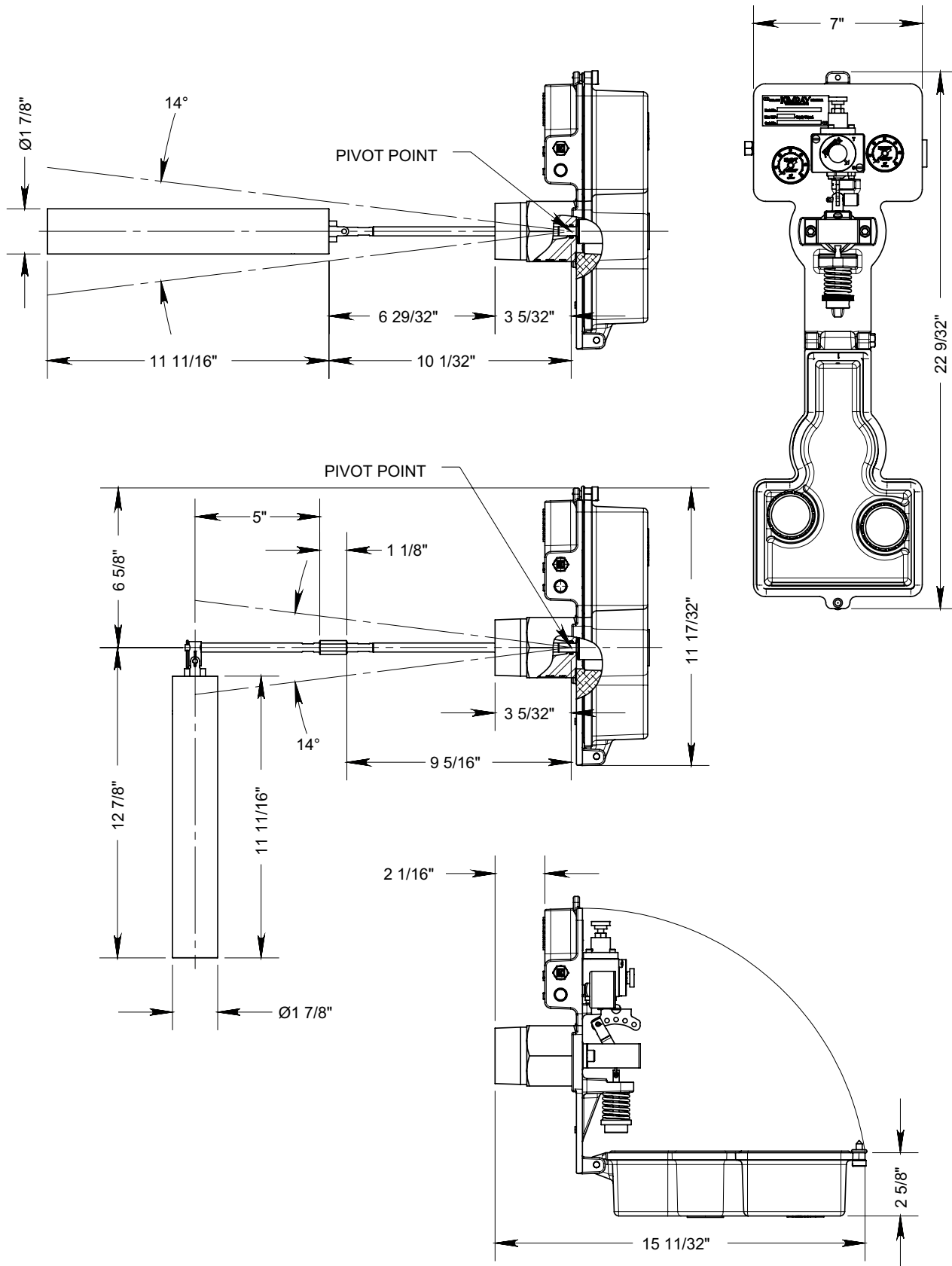
GEN II



FLOAT OPERATED CONTROLLERS

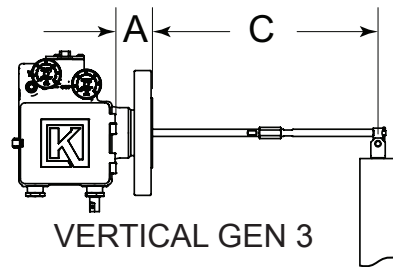


DIMENSIONS CONTROLLER BACK MOUNT

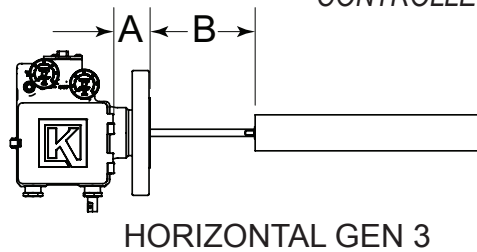


All Pictures shown are for illustration purpose only. Actual product may vary due to product enhancement.

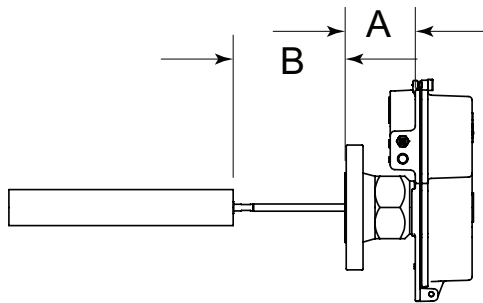
DIMENSIONS CONTROLLER FLANGES



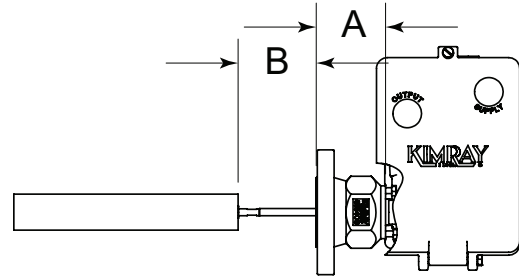
VERTICAL GEN 3



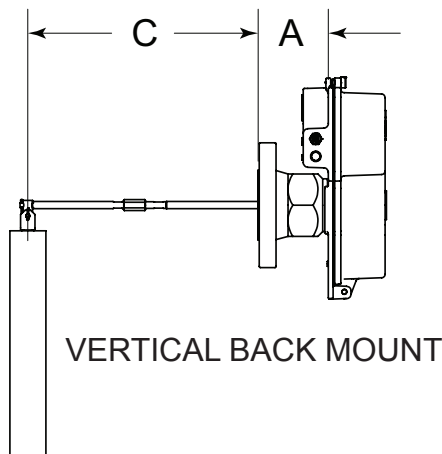
HORIZONTAL GEN 3



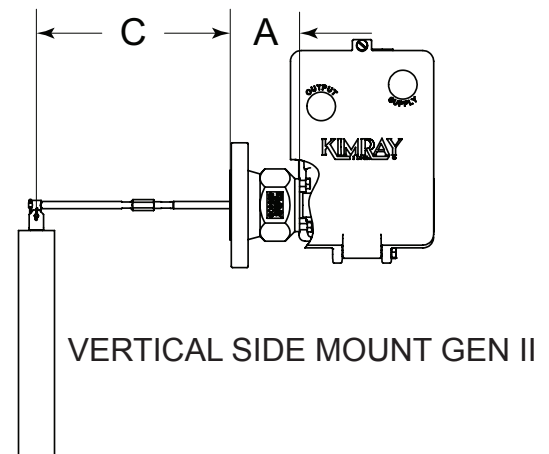
HORIZONTAL BACK MOUNT



HORIZONTAL SIDE MOUNT GEN II



VERTICAL BACK MOUNT



VERTICAL SIDE MOUNT GEN II

| FLANGES | | 150# | | | 300# | | | 600# | | | 900# | | | 1500# | | | |
|-------------------|-------------|------|---------|---------|----------|---------|---------|---------|---------|---------|----------|---------|---------|---------|---------|---------|----------|
| TYPE | SIZE | A | B | C | A | B | C | A | B | C | A | B | C | A | B | C | |
| GEN 3 | Raised Face | 2" | 1 11/16 | 5 3/4 | 11 15/16 | 1 29/32 | 5 15/32 | 11 3/4 | 2 3/16 | 5 1/4 | 11 7/16 | --- | --- | --- | 2 41/16 | 4 3/4 | 10 15/16 |
| | | 3" | 1 11/16 | 5 3/4 | 11 15/16 | 2 1/16 | 5 21/16 | 11 9/16 | 2 7/16 | 5 | 11 3/16 | 3 3/32 | 4 3/8 | 10 9/16 | 3 13/16 | 3 4 | 9 13/16 |
| | | 4" | 1 7/8 | 5 9/16 | 11 3/4 | 2 3/16 | 5 9/16 | 11 7/16 | 2 41/16 | 4 3/4 | 10 15/16 | 2 21/32 | 4 13/16 | 11 | 3 9/32 | 4 3/16 | 10 3/8 |
| | | 6" | --- | --- | --- | --- | --- | --- | --- | --- | --- | --- | --- | --- | 4 5/32 | 3 5/16 | 9 1/2 |
| | Ring Joint | 2" | --- | --- | --- | --- | --- | --- | 2 1/4 | 5 3/16 | 11 3/8 | --- | --- | --- | 2 7/16 | 5 | 11 3/16 |
| | | 3" | --- | --- | --- | --- | --- | --- | 2 3/16 | 5 1/4 | 11 7/16 | 2 7/16 | 4 41/16 | 10 7/8 | --- | --- | --- |
| 4" | | --- | --- | --- | --- | --- | --- | 2 7/16 | 4 41/16 | 10 7/8 | --- | --- | --- | --- | --- | --- | |
| GEN II SIDE MOUNT | Raised Face | 2" | 3 7/16 | 4 5/8 | 10 3/4 | 3 5/8 | 4 1/16 | 10 9/16 | 3 15/16 | 3 5/8 | 10 1/4 | --- | --- | --- | 4 7/16 | 3 3/16 | 9 3/4 |
| | | 3" | 3 7/16 | 4 1/4 | 10 3/4 | 3 15/16 | 3 3/4 | 10 1/4 | 4 3/16 | 3 3/16 | 10 | 4 13/16 | 3 1/16 | 9 3/8 | 6 5/16 | 1 3/8 | 7 7/8 |
| | | 4" | 3 11/16 | 3 15/16 | 10 1/2 | 3 15/16 | 3 3/4 | 10 1/4 | 4 7/16 | 3 1/4 | 9 3/4 | 5 1/8 | 2 9/16 | 9 1/16 | 5 3/4 | 1 15/16 | 8 7/16 |
| | | 6" | --- | --- | --- | --- | --- | --- | --- | --- | --- | --- | --- | --- | 5 7/8 | 1 13/16 | 8 5/16 |
| | Ring Joint | 2" | --- | --- | --- | --- | --- | --- | 4 | 3 1/2 | 10 3/16 | --- | --- | --- | 4 3/16 | 3 1/2 | 10 |
| | | 3" | --- | --- | --- | --- | --- | --- | 3 15/16 | 3 3/4 | 10 1/4 | 4 1/2 | 3 3/16 | 9 11/16 | --- | --- | --- |
| 4" | | --- | --- | --- | --- | --- | --- | 4 1/2 | 3 3/16 | 9 11/16 | --- | --- | --- | --- | --- | --- | |
| BACK MOUNT | Raised Face | 2" | 3 1/2 | 6 16/13 | 12 3/8 | 5 9/16 | 3 11/16 | 12 | 4 | 5 7/16 | 11 7/8 | 4 1/2 | 5 13/16 | 11 3/8 | --- | --- | --- |
| | | 3" | 3 1/2 | 6 13/16 | 12 3/8 | 3 13/16 | 6 7/16 | 12 | 4 1/4 | 1/16 | 11 5/8 | 4 7/8 | 5 7/16 | 11 | 9 1/2 | 3 15/16 | 6 5/16 |
| | | 4" | 3 11/16 | 6 5/8 | 12 3/16 | 4 | 6 5/16 | 11 7/8 | 4 1/2 | 5 13/16 | 11 3/8 | --- | --- | --- | 5 1/8 | 5 3/16 | 10 3/4 |
| | | 6" | --- | --- | --- | --- | --- | --- | --- | --- | --- | --- | --- | --- | --- | --- | --- |
| | Ring Joint | 2" | --- | --- | --- | --- | --- | --- | 4 1/16 | 6 1/4 | 11 13/16 | --- | --- | --- | 4 1/4 | 6 1/16 | 11 5/8 |
| | | 3" | --- | --- | --- | --- | --- | --- | 4 | 6 5/16 | 11 7/8 | 4 9/16 | 5 3/4 | 11 5/16 | --- | --- | --- |
| 4" | | --- | --- | --- | --- | --- | --- | 4 9/16 | 5 3/4 | 11 5/16 | --- | --- | --- | --- | --- | --- | |

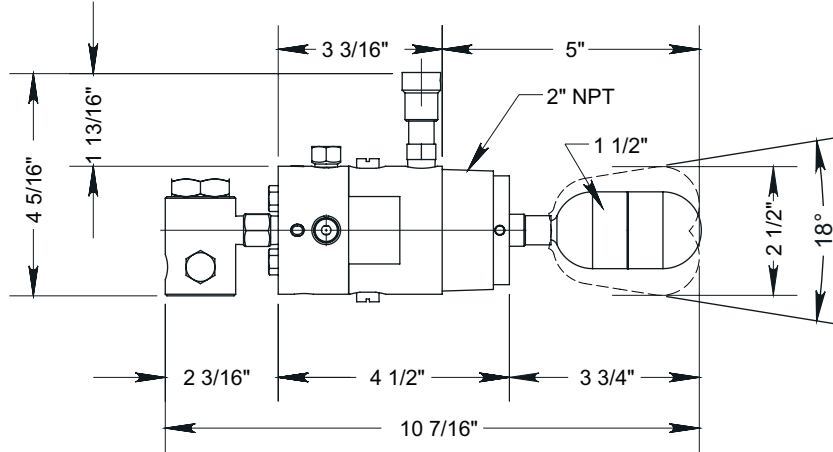
All Pictures shown are for illustration purpose only. Actual product may vary due to product enhancement.

FLOAT OPERATED CONTROLLERS

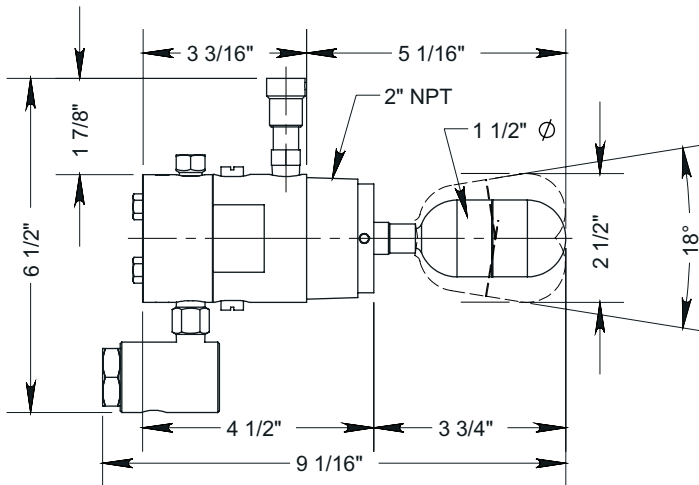


DIMENSIONS PNEUMATIC LEVEL SWITCH

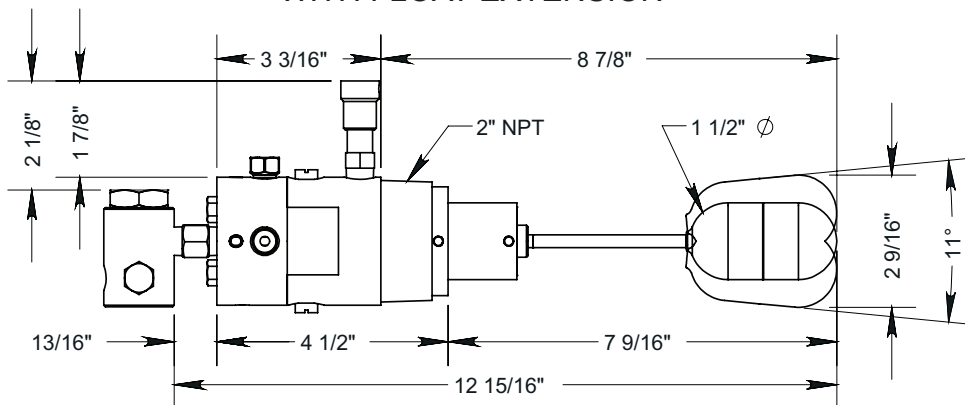
WITH RELAY



WITH OUT RELAY

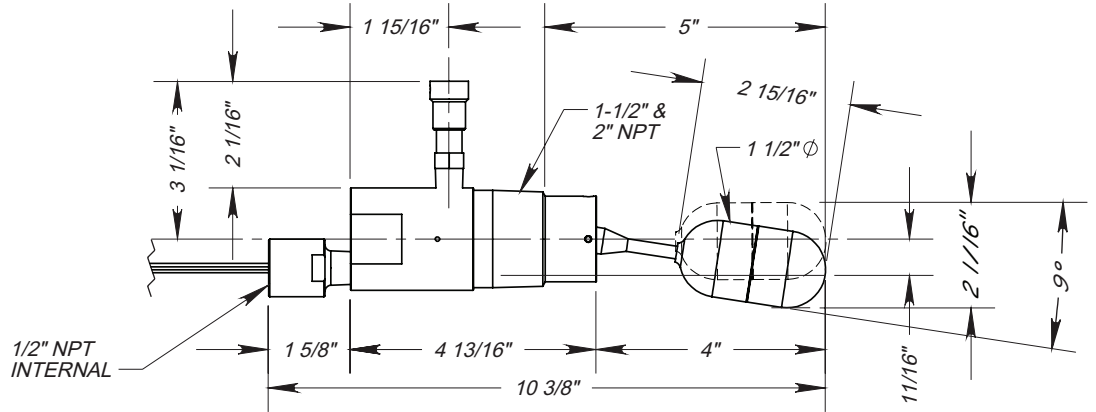


WITH FLOAT EXTENSION

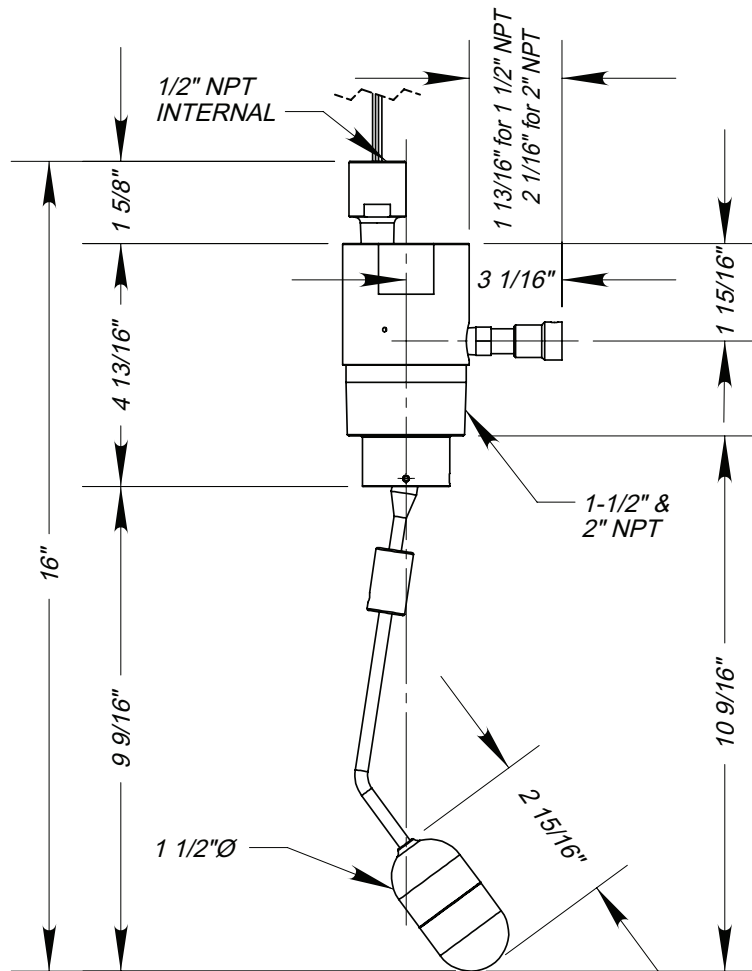


All Pictures shown are for illustration purpose only. Actual product may vary due to product enhancement.

HORIZONTAL



VERTICAL



All Pictures shown are for illustration purpose only. Actual product may vary due to product enhancement.

| Table 1 - GEN 3 Seal Options | | | |
|------------------------------|----------------|-------------------|-------------------|
| Product Type | Part | Standard Material | Optional Material |
| Pneumatic | Mounting Piece | FKM | AFLAS®, HSN, |
| | Pilot Seals | FKM | N/A |

| Table 2 - GEN II Seal Options | | | |
|-------------------------------|----------------|-------------------|-------------------|
| Product Type | Part | Standard Material | Optional Material |
| Pneumatic & Electric | Mounting Piece | LTV | AFLAS®, HSN, PTFE |
| Pneumatic | Pilot Seals | FKM | N/A |

| Table 3 - Level Switch Seal Options | | | |
|-------------------------------------|-----------|-------------------|----------------------|
| Product Type | Part | Standard Material | Optional Material |
| Electric Switch | O-rings | FKM | AFLAS®, HSN, Nitrile |
| Pneumatic Switch | O-rings | FKM | AFLAS®, HSN, Nitrile |
| | Diaphragm | FKM | LTN |

| Table 4 - Seal Specifications | | | | | | |
|--|------------------|----------------|------------------|--------------------------|----------------|----------------|
| | | NITRILE | LOW TEMP NITRILE | HIGHLY SATURATED NITRILE | FKM | AFLAS® |
| | Kimray Suffix | - | LTN | HSN | V | AF |
| Resistance | Abrasion | G | G | G-E | G | G |
| | Acid | F | F | G-E | G-E | E |
| | Chemical | F | F | F | E | E |
| | Cold | G | E | G | P | P |
| | Flame | P | P | P | E | E |
| | Heat | G | G | E | E | E |
| | Oil | G-E | G-E | E | E | E |
| | Ozone | P | P | G | G-E | E |
| | Set | G | G | G | G-E | P |
| | Tear | F | F | F | F | P |
| | Water/Steam | F | F | E | P | G |
| | Weather | F | F | G | E | E |
| | CO2 | F-G | F-G | G | G | G |
| | H2S | P | P | F | P | E |
| | Methanol | F | P | E | P | P |
| Properties | Dynamic | G | G | G | G | G |
| | Electrical | F | F | F | F | G-E |
| | Impermeability | G | G | G | G | G |
| | Tensile Strength | G | G | G-E | G | F |
| Temp. Range | | -20° to +225°F | -65° to +225°F | -20° to +250°F | -15° to +400°F | +15° to +450°F |
| | | -29° to +107°C | -53° to +107°C | -29° to +121°C | -26° to +204°C | -9° to +232°C |
| RATINGS: P-POOR, F-FAIR, G-GOOD, E-EXCELLENT | | | | | | |

| Table 5 - Material Options | | | |
|--|---|---|--------------------------|
| | Component | Standard Material | Optional Material |
| Pneumatic GEN3 Level Controllers | Body | Steel (ASTM SA352LCB) | 316SS (ASTM A351 CF8M) |
| | Pilot | Aluminum (ASTM B221 6061-T6) | N/A |
| | Shaft & Bearing Hubs | Steel (ASTM) | 316SS (ASTM A240) |
| | Bearings | Polyimide filled PTFE | N/A |
| | Levers | Steel (FLN2C-4005) | N/A |
| | Displacer | PVC | 316SS (ASTM A 240) |
| | Spring | 17-7SS (ASTM A313) | N/A |
| Pneumatic & Electric GEN II Level Controllers | Body | Steel (ASTM SA352LCB) | 316SS (ASTM A351 CF8M) |
| | Pilot | Aluminum (ASTM B221 6061-T6) | N/A |
| | Link | 303SS (ASTM A582) | N/A |
| | Tangent Arm | 316SS (ASTM A240) | N/A |
| | Waggle Arm | 316SS (ASTM A479) | N/A |
| | Displacer | PVC | 316SS (ASTM A 240) |
| | Spring | 17-7PH Condition C 302SS (ASTM A313) | N/A |
| Pneumatic Level Switches | Body | Aluminum (ASTM B221 6061-T6) | N/A |
| | Float | 316SS (ASTM A 240) | N/A |
| External Float Cages | Electronic & Pneumatic Level Switch Float Cage | Steel (ASTM SA352LCB) | 316SS (ASTM A351 CF8M) |
| | Horizontal GEN II Float Cage | ASTM A-106 GR. B | N/A |
| | Vertical External GEN II Float Cage | SA-106B, SA-234 WPB, SA-516-70 | N/A |

NOTES:



Kimray is an ISO 9001- certified manufacturer.