






BISTABLE PILOT MODEL BR

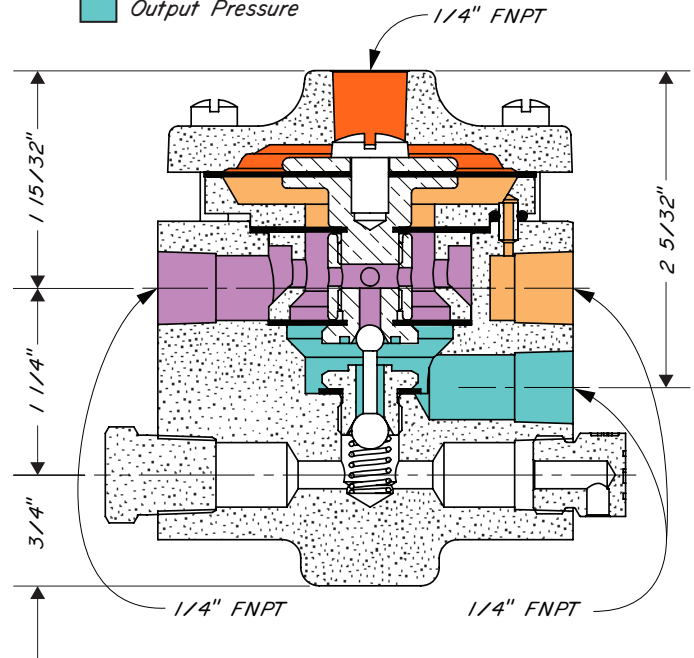
APPLICATION:

Any system where two temporary pressure signals are available. One signal to turn "ON" the pilot and one signal to turn "OFF" the pilot.

FEATURES:

- Bistable operation
- Temporary signal will turn "ON" or "OFF"
- Intermittent vent pilot
- Semi-snap action

-  Diaphragm Assembly
-  Supply Pressure
-  On Signal
-  Off Signal
-  Output Pressure



Standard Configuration Code †	Order Code	On/Off Signal	Supply Press psig	Output Press psig	Max. W.P. psig ††
PBR0D0S	YAH1	20 - 30	20 - 30	0 or Supply	30

NOTES:

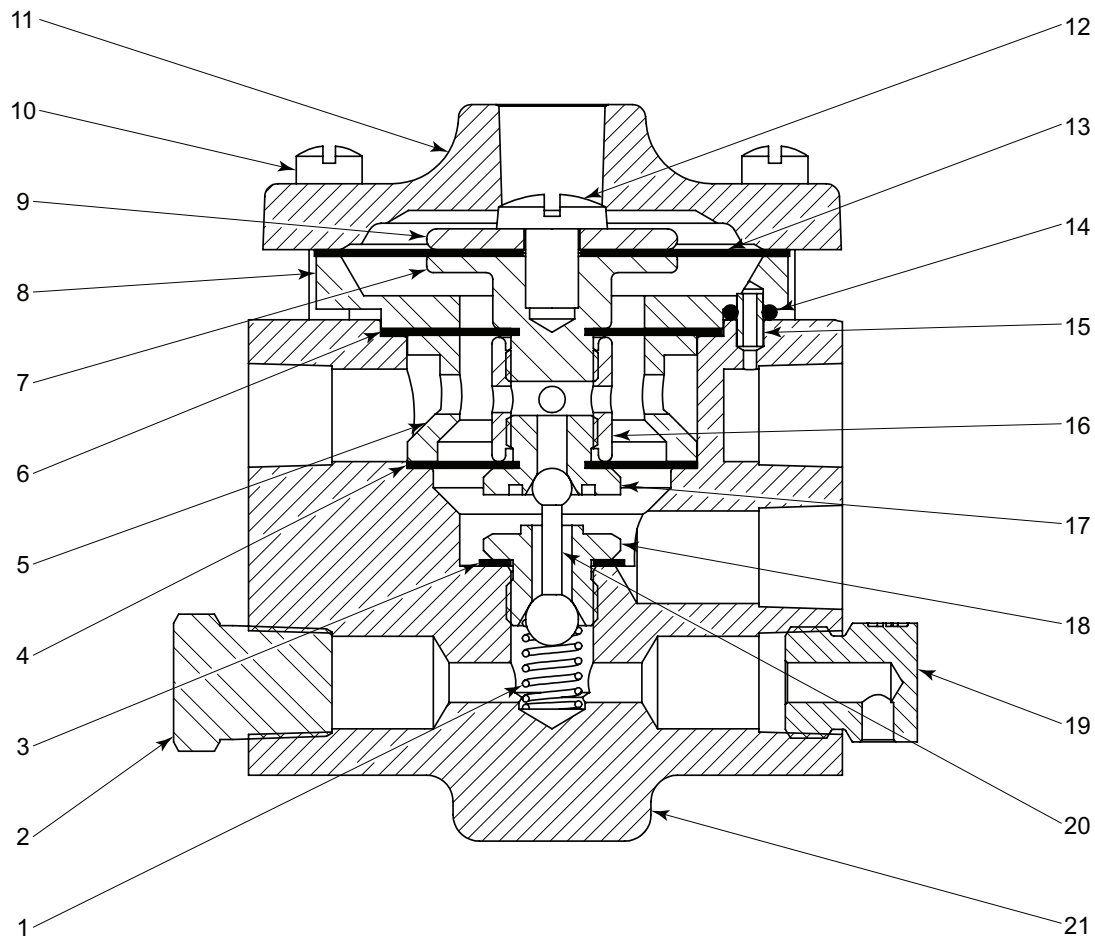
For standard & optional seals, metals, Cf Cv values, material specifications & dimensions see technical data on pages 09:I - 09:IV

† For Corrosive service remove last "S" & replace with "C"

† For code builder see page 09:00.4

†† Max W.P. values based on -20°F to 100°F.

BISTABLE PILOT
MODEL BR DRAWING & PARTS LIST



ITEM	QTY.	DESCRIPTION	PART NO		ITEM	QTY.	DESCRIPTION	PART NO	
			STANDARD	CORROSIVE				STANDARD	CORROSIVE
1	1	Spring *	585		12	1	Screw	2670SS6	
2	1	Plug	699		13	1	Diaphragm *	896HSN	
3	1	Gasket *	118		14	1	O-Ring *	569HSN	
4	1	Diaphragm *	2619		15	1	Jumper Tube	895	895SS6
5	1	Spool	2616	2616SS6	16	1	Spacer	581	581SS6
6	1	Diaphragm *	583HSN		17	1	Seat *	113	113SS6
7	1	Lower Diaph. Plate	857	857SS6	18	1	Seat *	565	565SS6
8	1	Housing	2617	2617SS6	19	1	Breather Plug	147	
9	1	Upper Diaph. Plate	2618	2618SS6	20	1	Pilot Plug *	112	
10	6	Screw	573		21	1	Body	2615	2615SS6
11	1	Cover	2620	2620SS6			Repair Kit	RXY	

* These parts are recommended spare parts and are stocked as repair kits.

CODE BUILDER
P SERIES (RELAYS)

Series:

P = Pilots & Relays

Model:

VL = 30 Volume Booster
VH = 300 Volume Booster
BR = Bistable Relay
PT = Pressurestat

Action

0 = N/A (VH, BR, PT only)
S = Snap (VL only)
T = Throttle (VL only)
M = Manual Reset (VL only)

Shell Material:

D = Ductile Iron
C = 316SS (C service type only)

Control Range:

0 = N/A

Service Type:

S = Standard
C = Corrosive (C shell material only)

P	VL	S	D	0	S	
---	----	---	---	---	---	--

Options: Additional cost and lead times will apply
If multiple options required input in sequential order
Leave blank if no options required

1 = NACE Certification (Corrosive Option Only)
V = FKM Elastomer

Not all selections available on all products listed.
See product pages 01:40.1 - 01:70.2 for available options